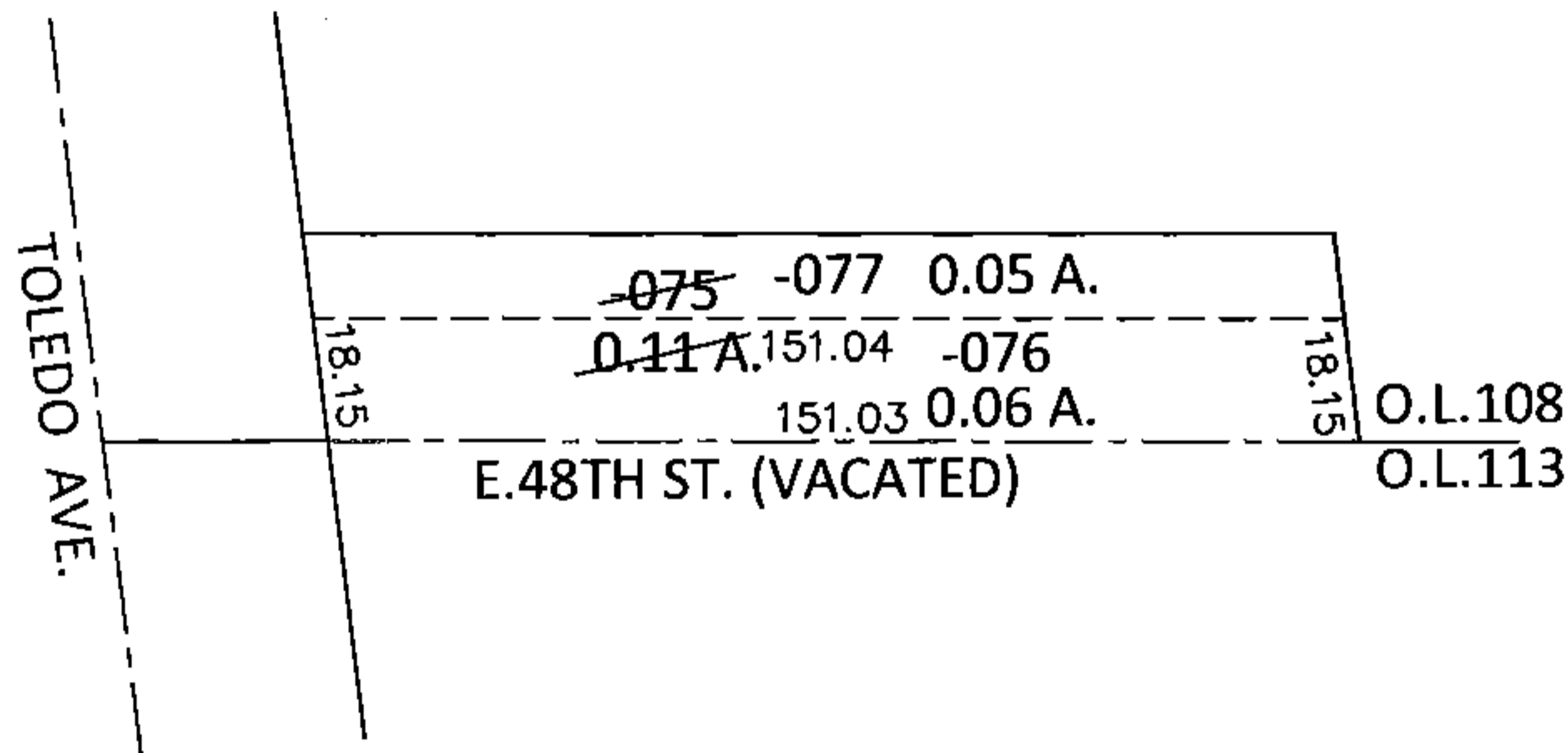
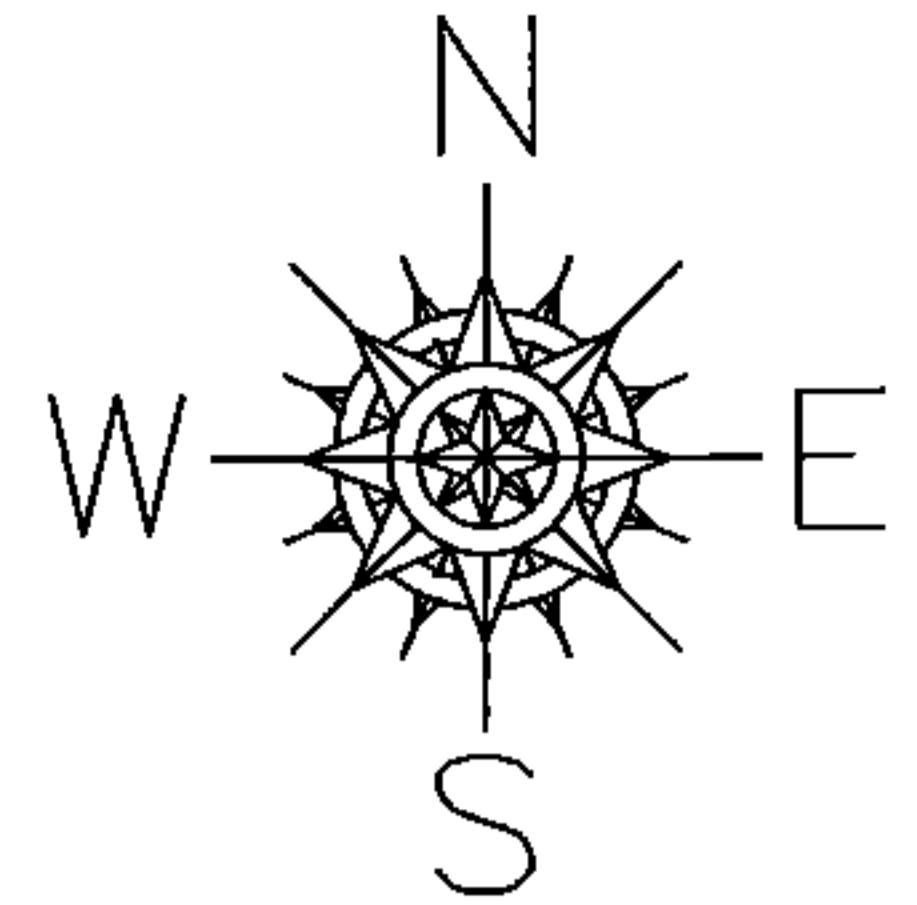


PARENT PARCEL: 03-00-108-111-075

CHILD PARCEL: 03-00-108-111-076, -077

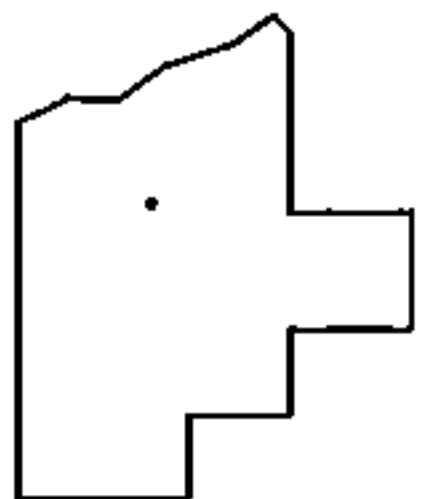
STARTING POINT: INTERSECTION OF EAST LINE OF TOLEDO AVE. AND SOUTH LINE OF O.L.108

15-00707



LOR-SHEFFIELD TWP. SRTS

5-WDV



SPLITS/DEEDS PROCESSED

LORAIN COUNTY TAX MAP DEPARTMENT  
226 MIDDLE AVE. ELYRIA, OHIO

SURVEYED BY: AMY BERNICKEN

CLOSURE: .00:10,000

MAP PAGE(S): 3-00-108-B

APPROVED BY: RRM DATE: 2-26-15

SCALE: 1"= 50' PRIOR INST.: OR 781/465