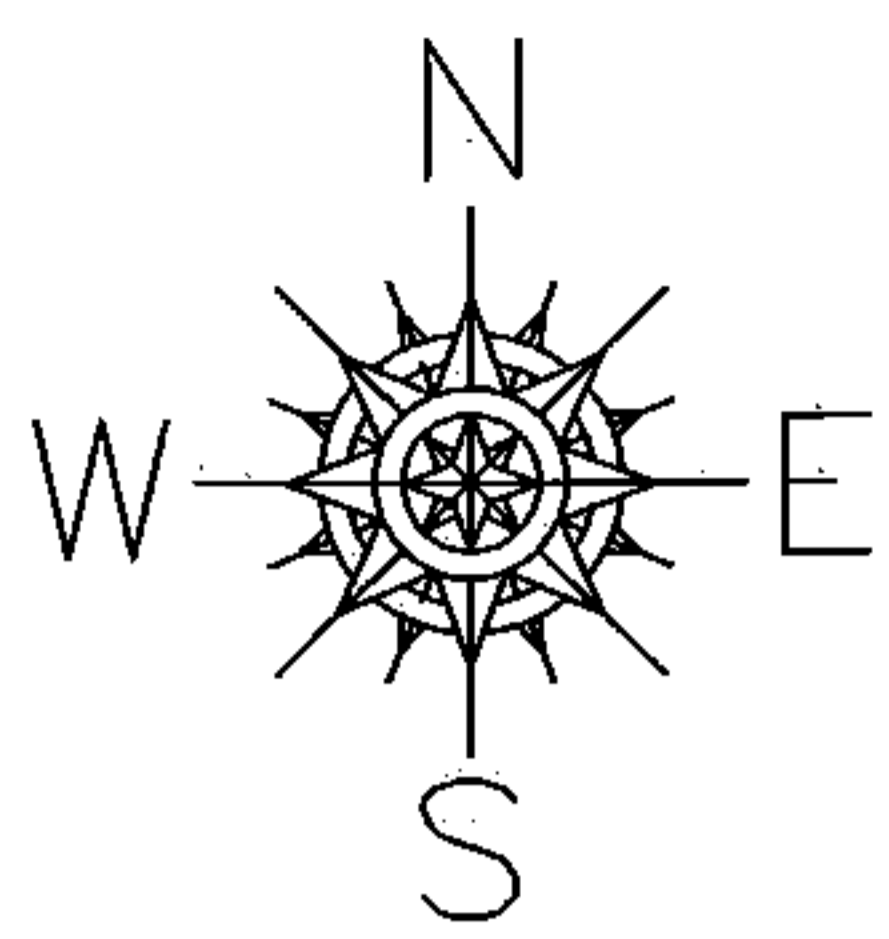


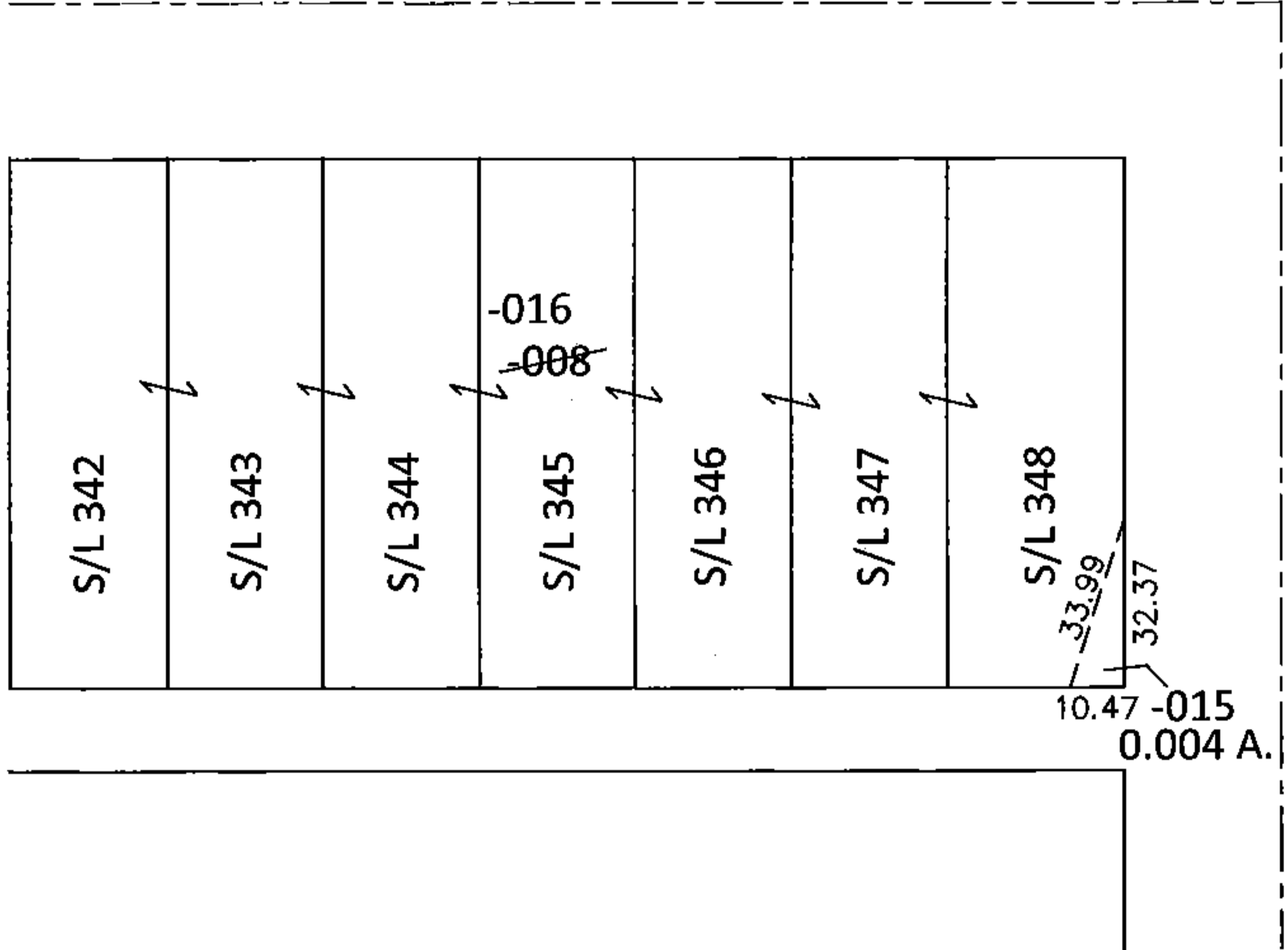
PARENT PARCEL: 03-00-075-106-008
CHILD PARCEL: 03-00-075-106-015, -016
STARTING POINT: SOUTHEAST CORNER OF S/L 348 IN LIBERTY SUB. (VOL.9 PG.26)

15-00706

LOR-SHEFFIELD TWP. SRTS
1-WDV

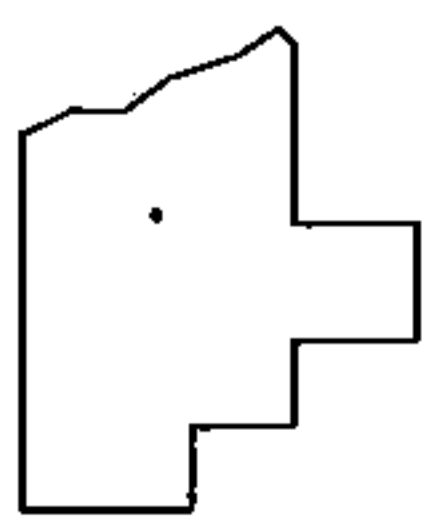


VINCENT AVE.



~~03-00-075-106-008~~
~~214.67 X 102~~

03-00-075-106-015 03-00-075-106-016
0.004 A. 214.67 X 102 IRR



SPLITS/DEEDS PROCESSED
LORAIN COUNTY TAX MAP DEPARTMENT
226 MIDDLE AVE. ELYRIA, OHIO

SURVEYED BY: AMY BERNICKEN
CLOSURE: .00:10,000
MAP PAGE(S): 3-00-075-A
APPROVED BY: RRM DATE: 2-26-15
SCALE: 1"= 50' PRIOR INST.: DV 299/256