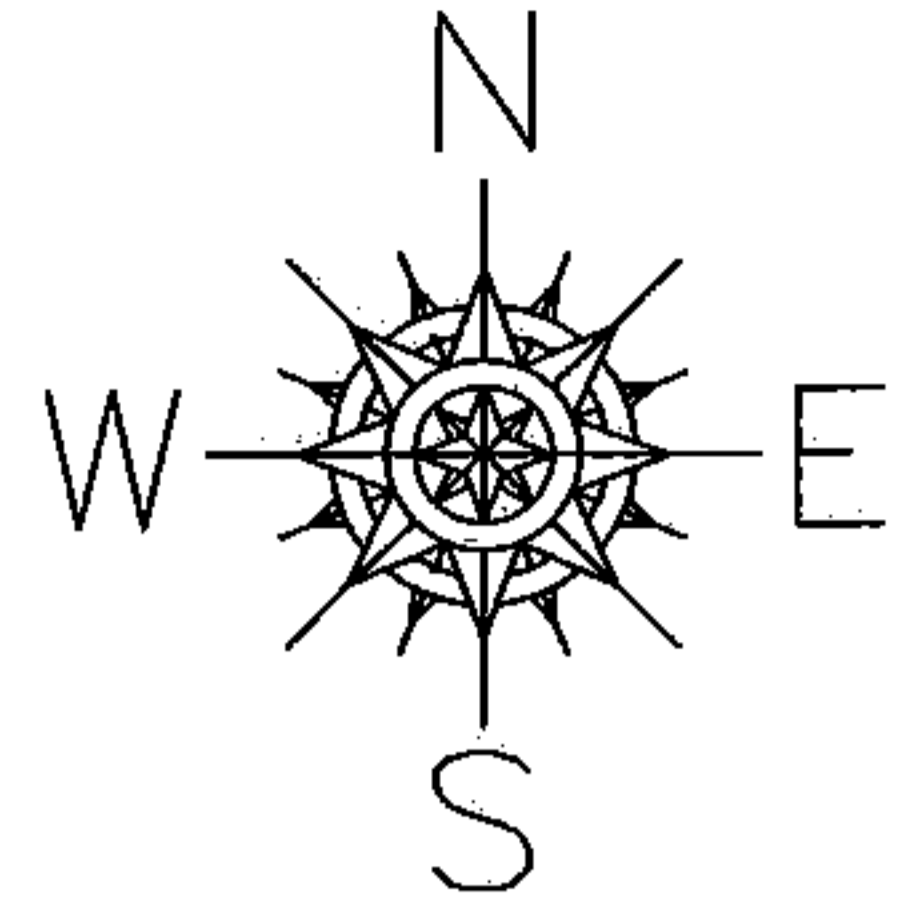


PARENT PARCEL: 12-00-026-000-024

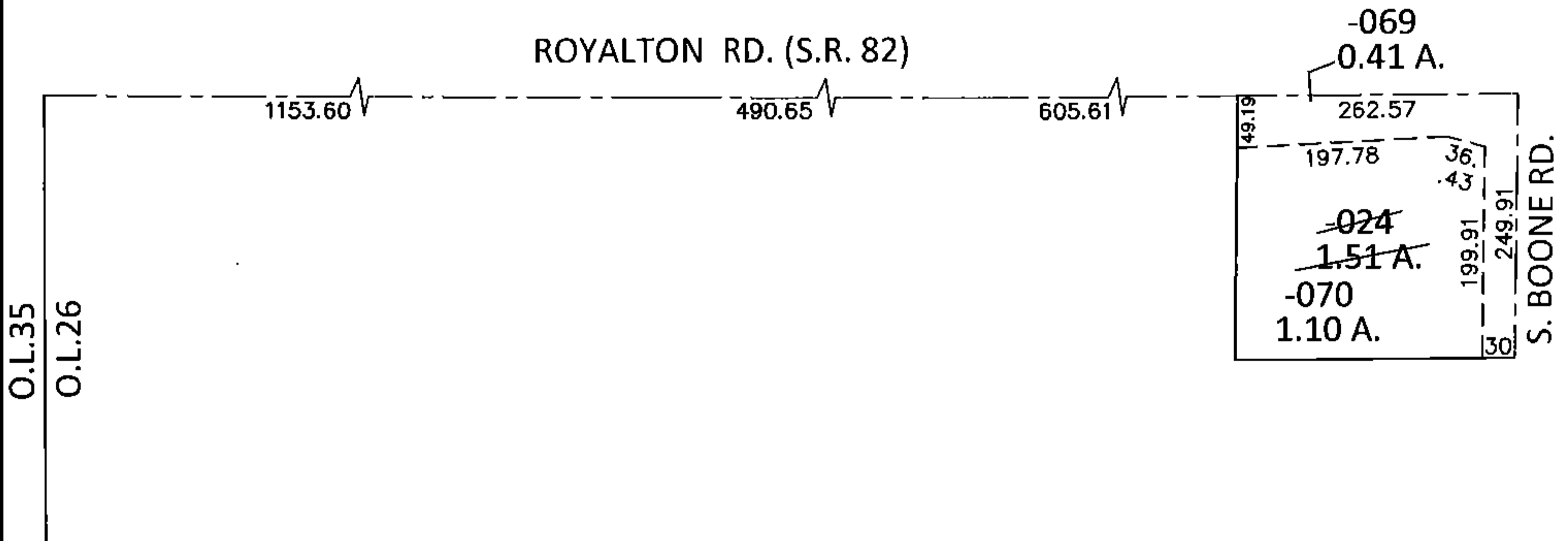
CHILD PARCEL: 12-00-026-000-069, -070

STARTING POINT: INTERSECTION OF C/L OF S.R. 82 AND WEST LINE OF O.L.26

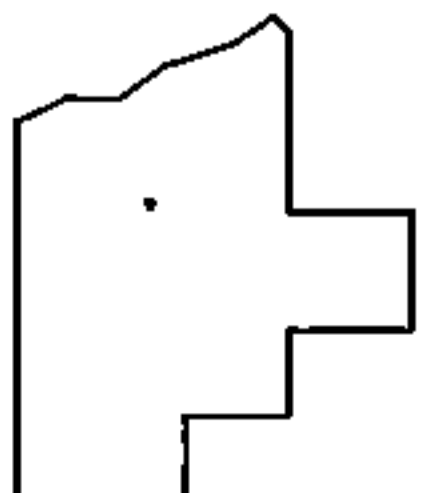
15-00705



ROYALTON RD. (S.R. 82)



LOR-82-8.98  
24-WD



SPLITS/DEEDS PROCESSED

LORAIN COUNTY TAX MAP DEPARTMENT  
226 MIDDLE AVE. ELYRIA, OHIO

SURVEYED BY: AMY M. KELLY

CLOSURE: .01:10,000

MAP PAGE(S): 12-00-026-B

APPROVED BY: RRM DATE: 2-17-15

SCALE: 1"=200 PRIOR INST.: 20080267895