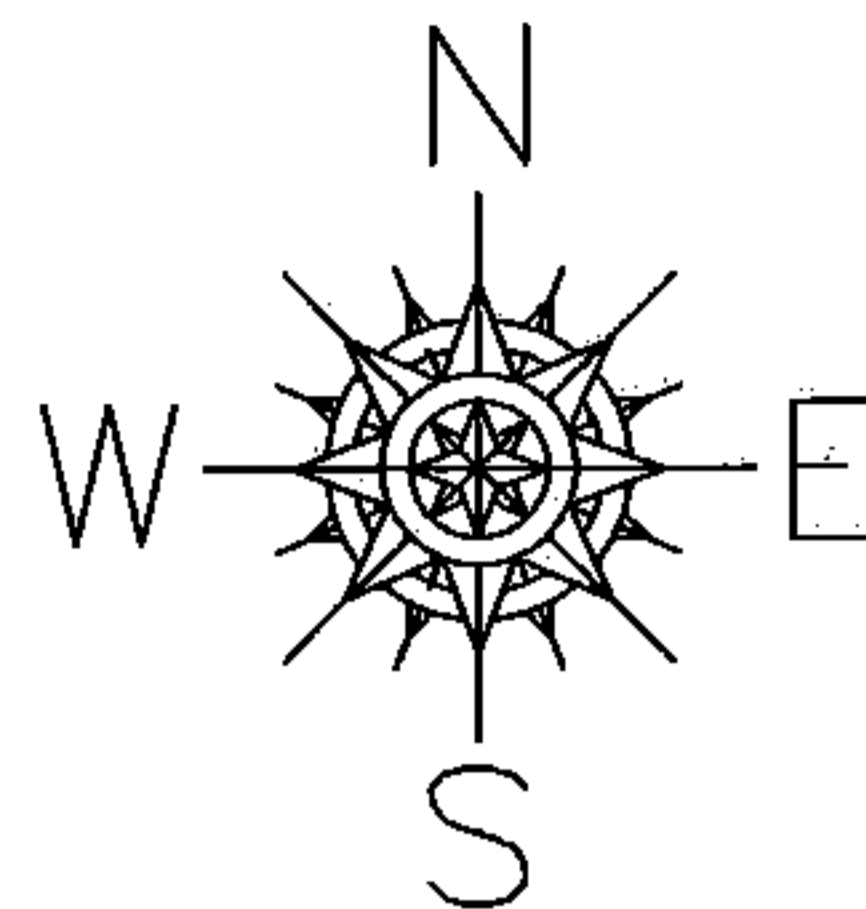


PARENT PARCEL: 12-00-025-000-056

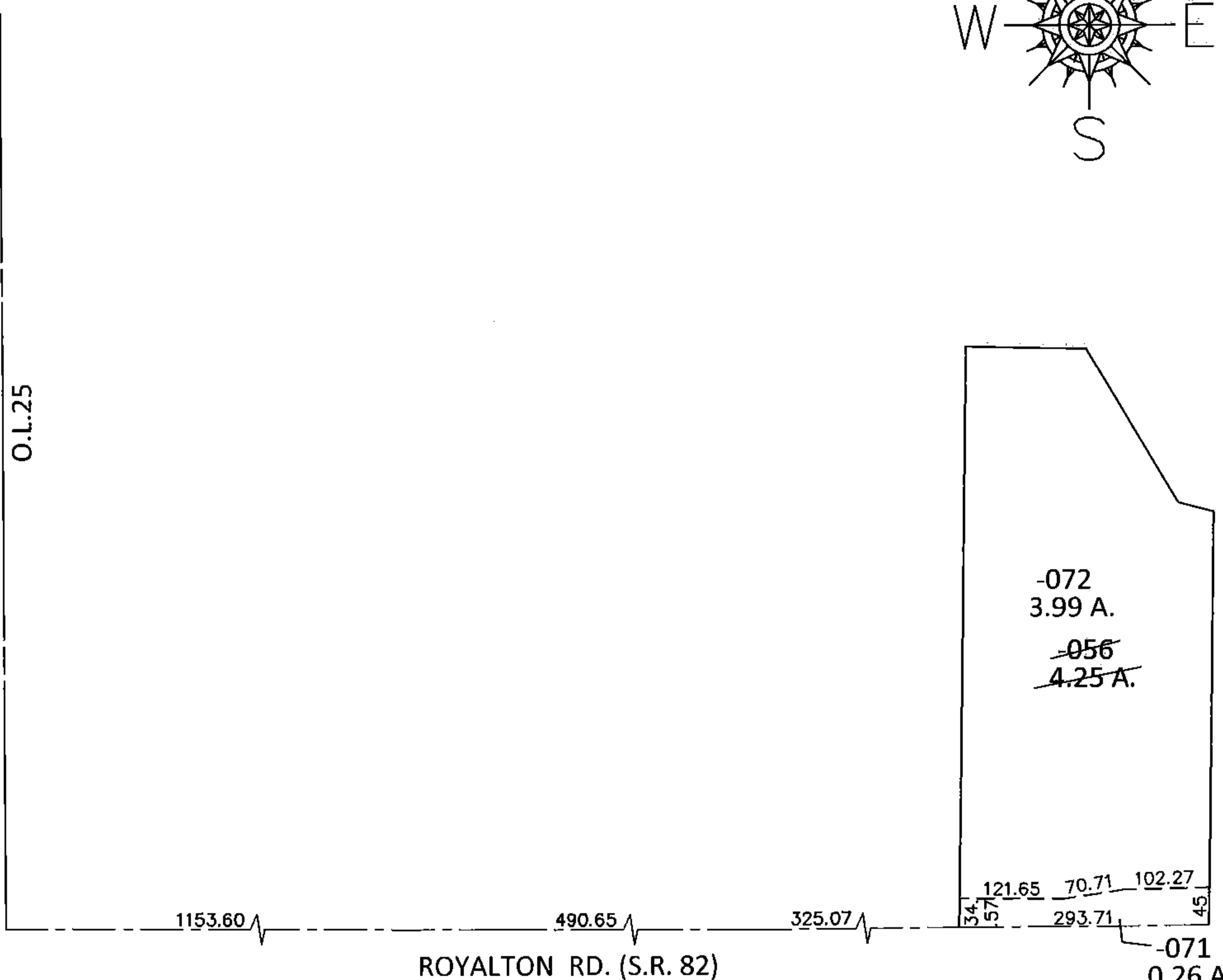
CHILD PARCEL: 12-00-025-000-071, -072

STARTING POINT: INTERSECTION OF C/L OF S.R. 82 AND WEST LINE OF O.L.25

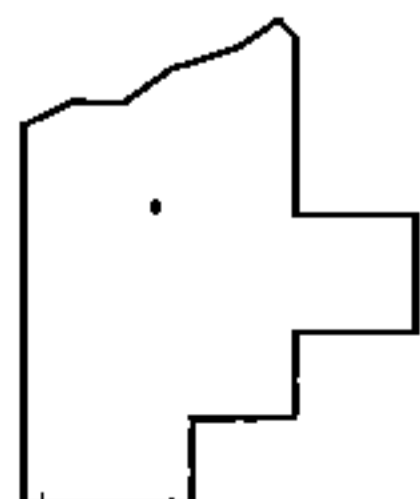
**15-00702**



O.L.36  
O.L.25



**LOR-82-8.98**  
21-WD



**SPLITS/DEEDS PROCESSED**

LORAIN COUNTY TAX MAP DEPARTMENT  
226 MIDDLE AVE. ELYRIA, OHIO

SURVEYED BY: AMY M. KELLY  
CLOSURE: .01:10,000  
MAP PAGE(S): 12-00-025-B  
APPROVED BY: RRM DATE: 2-17-15  
SCALE: 1"=200 PRIOR INST.: OR 1188/291