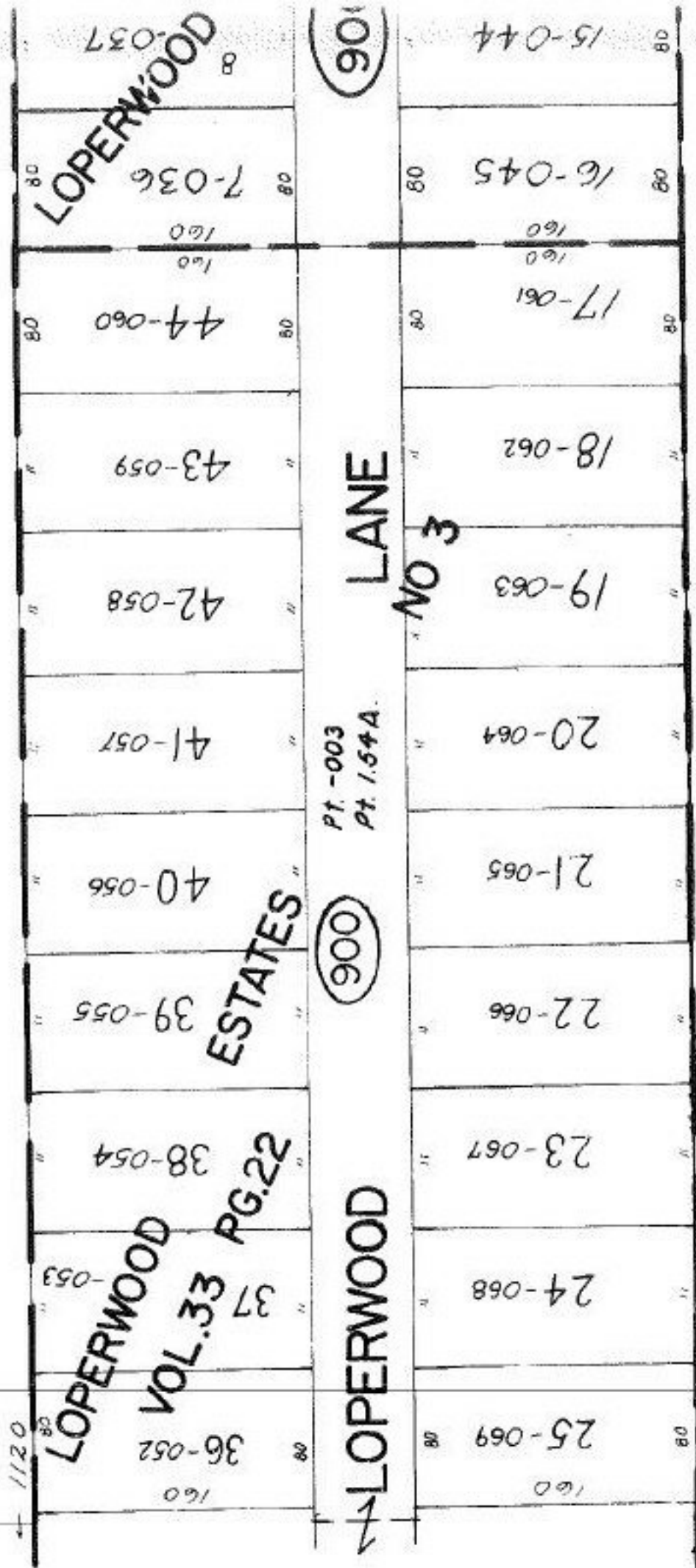


2496.69

PT. -077
PT. 20, 50 A.
Pt. -075
Pt. 21-HA.

11



#14999

APPROVED	
LORAIN CO.	
MAP DEPT.	
DATE	3-7-83
PAGE	15-N-036-B
BY	C. Francis
VOID	
AFTER	

SEE 15-00-045-B

5-26-83

Handwritten signature

11/11/11