

1A-00-059-000-008 5.90 A - check with line (Hughes Rd)
 YOUNG, GORDON KEITH 11-8-65 917/365

OR YOUNG, GORDON & SHIRLEY C. 24A 9/12/56 675/533
 CHECK DV 53/158 WHEN COUNTY GOT IT.

NOT ON NEW MAPS

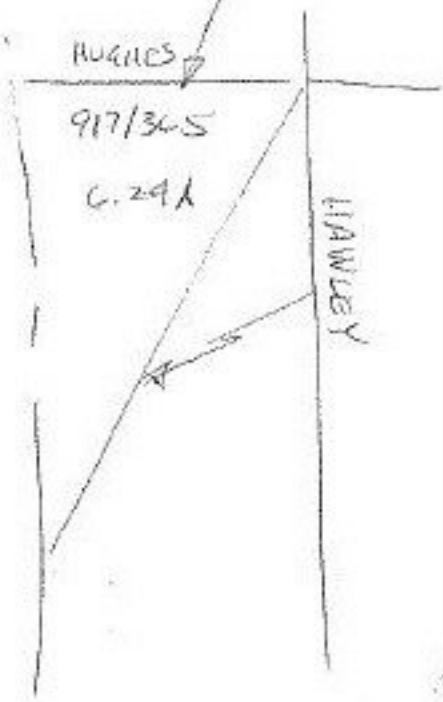
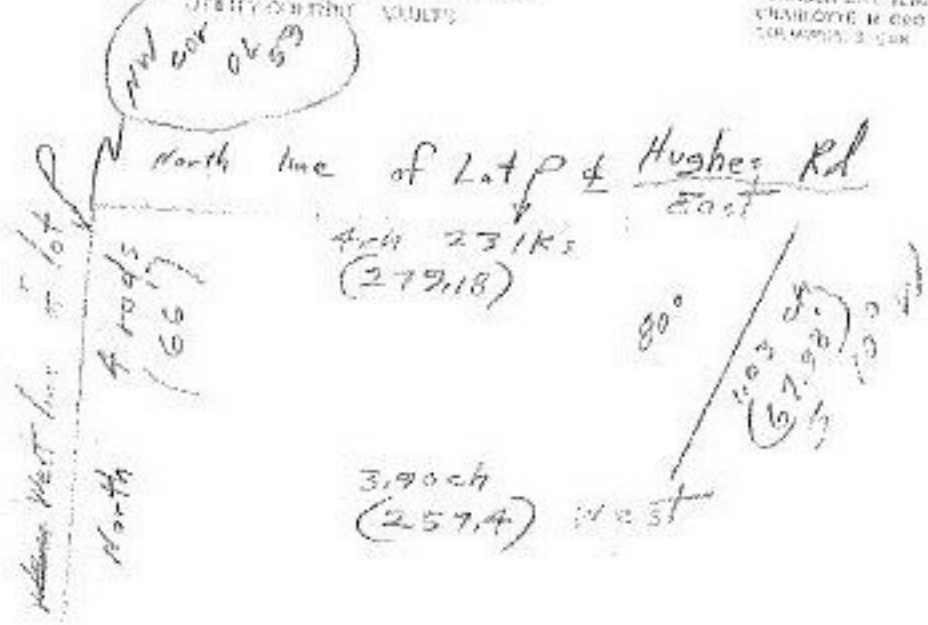
SAME DESCRIPTION
 675/533

Reliance
Reliance Universal Inc.

CONCRETE SEWER AND DRAIN PIPE MANHOLES
 PRECAST CONCRETE SEWER LANDING
 UTILITY CENTRAL VULTS

Construction Materials Division

COLUMBUS, OH	671 227-2141
COLUMBUS, OH	416 221-5775
DELAWARE, OH	614 361-1575
PITTSBURGH, PA	412 261-2141
DETROIT, MI	810 441-8888
LOANSVILLE, KY	502 363-0330
KNOXVILLE, TENN	415 246-8070
KNOXVILLE, TENN	615 487-4848
JOHNSON CITY, TENN	865 326-1120
CHARLOTTE, N. CAR	704 295-1501
COLUMBUS, OH	614 227-2141



Pg 14 D

Div 53/158
 Lorain County - for roadway purposes only
 Out Claim Bad.
 0.406 Acre

#14964

APPROVED
LORAIN CO.
MAP DEPT.
DATE 2.3.83
PAGE 1A-D
BY T.M. Han
VOID AFTER