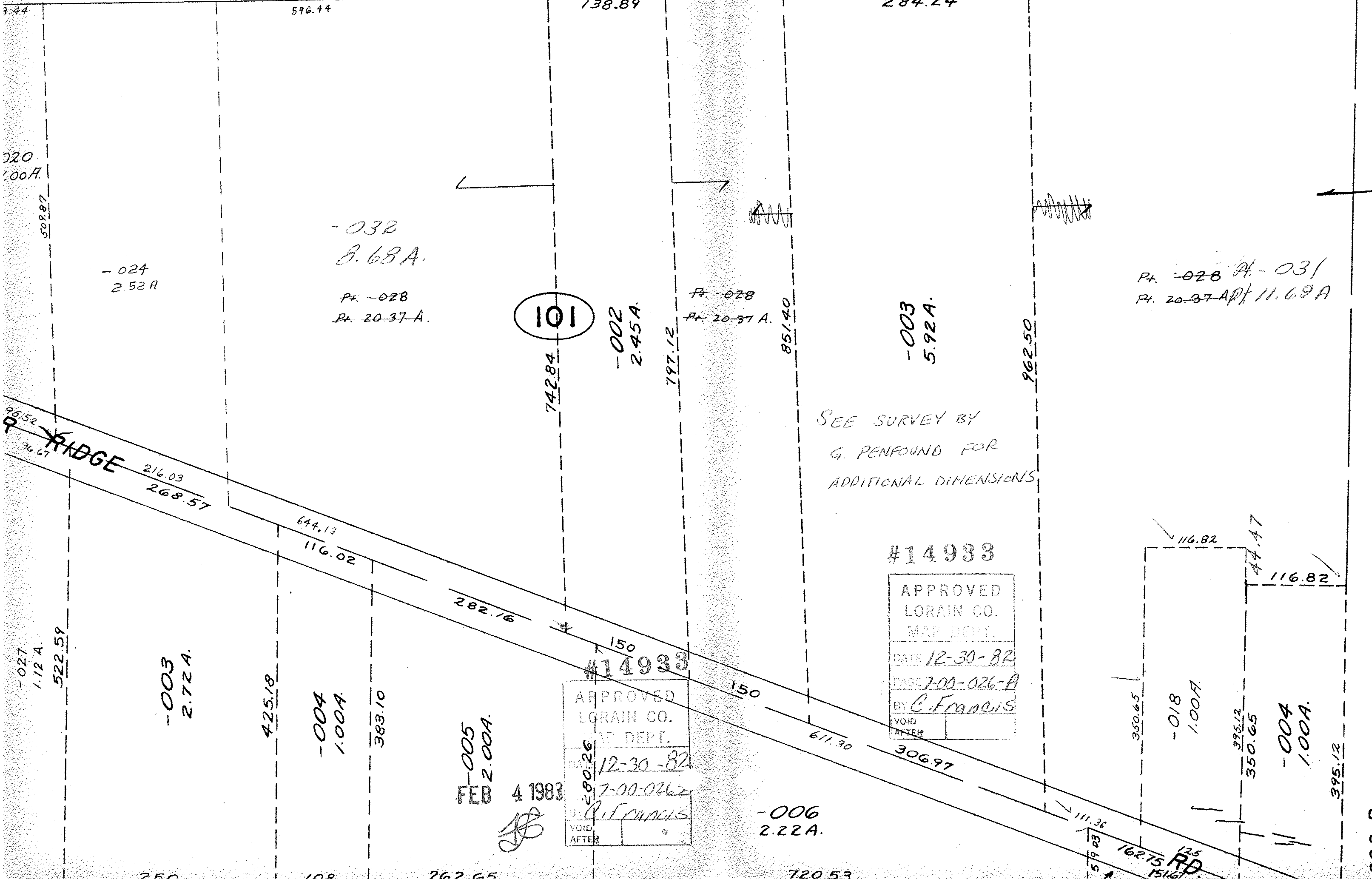


500

Pt. 07-00-034-500-001

Pt. 798A.



101

-032  
8.68 A.  
Pt. -028  
Pt. 20-37 A.

-002  
2.45 A.

-003  
5.92 A.

Pt. -028 Pt. -031  
Pt. 20-37 A. Pt. 11.69 A

SEE SURVEY BY  
G. PENFOUND FOR  
ADDITIONAL DIMENSIONS

#14933

APPROVED	
LORAIN CO.	
MAP DEPT.	
DATE	12-30-82
PAGE	7-00-026-A
BY	C. Francis
VOID	
AFTER	

APPROVED	
LORAIN CO.	
MAP DEPT.	
DATE	12-30-82
PAGE	7-00-026-A
BY	C. Francis
VOID	
AFTER	

FEB 4 1983

*[Signature]*

026-B