

- 004
40.00 A.

264
264
60
1.5A

250
175
1.00A
1.5A

- 001
69.00 A.

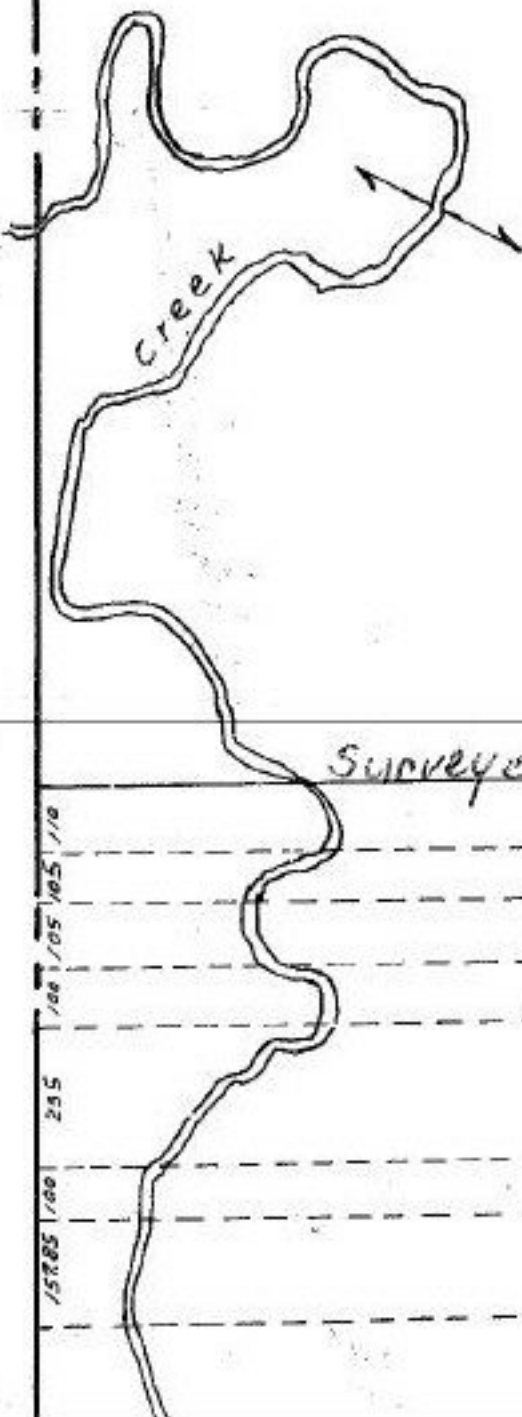
40

- 004
98.62 A.

14725
- 002
100.00 A.

300
200
- 003
1.38A
200
300

939.75



Surveyed By John Pozywak C=139,999,999

L007	2733.40	6.59A.
	2735.82	
- 017		6.44A.
	2730.17	
- 013	2740.52	6.45A.
- 006	2742.85	6.29A.

#14928

APPROVED
LORAIN CO.
MAP DEPT.

DATE: - 016 935.80
1.00A

PAGE 15-A

BY C. Francis

VOID AFTER

12-31-82
APR 1 1983

	- 018	12.63A.
	2748.32	
	2312.72	
- 015	2315.05	
		9.89A
- 011	2754.28	

AGONAL

15285 100 255 100 105 105 110

36
- 00
1.0
- 009
1.01
363