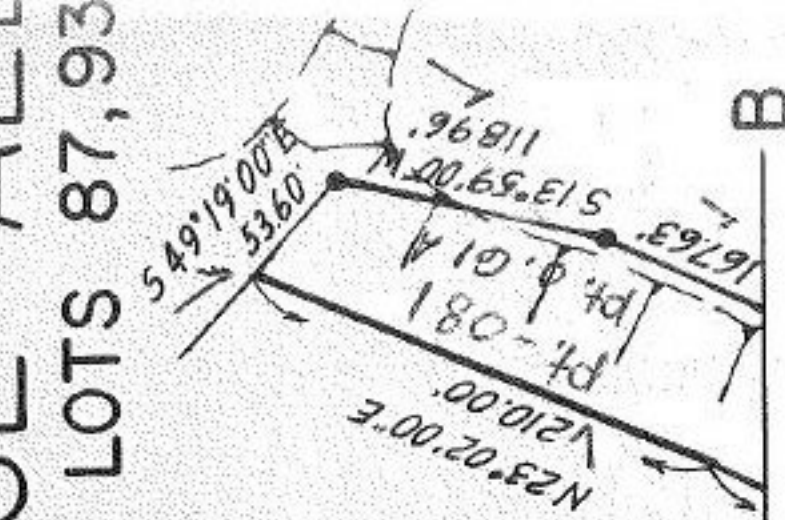


FLINT RIDGE ALL PART OF ORIGINAL LOTS 87, 93 LORAIN COUNTY



RUTH A. SKLENAR
VOL. 1065, PG. 892

I.P. FD. & USED

N 89° 53' 00" E 452.18'

250.00'

646.38'

N 00° 53' 35" E 332.97'

1.9135 AC.

N 29° 06' 00" E 183.00'

N 57° 54' 00" E 151.00'

N 89° 06' 25" E 260'

UTILITY EASEMENT

102

T.M. 85

1.29.85

#14917

11

1.9135 AC.

10

1.9249 AC.

130'

260'

11-00-093-102-075

11-00-093-102-081

11-00-093-102-082

O.L. 93

O.L. 94

APPROVED	
LORAIN CO.	
MAP DEPT.	
4.23.82	12-16-82
PAGE PLAT. 36/51	
BY C. Francis	
VOID	AFTER

NORMAN A. & ROSE M. LOESCH

VOL. 793, PG. 90

11-00-093-B

11-A