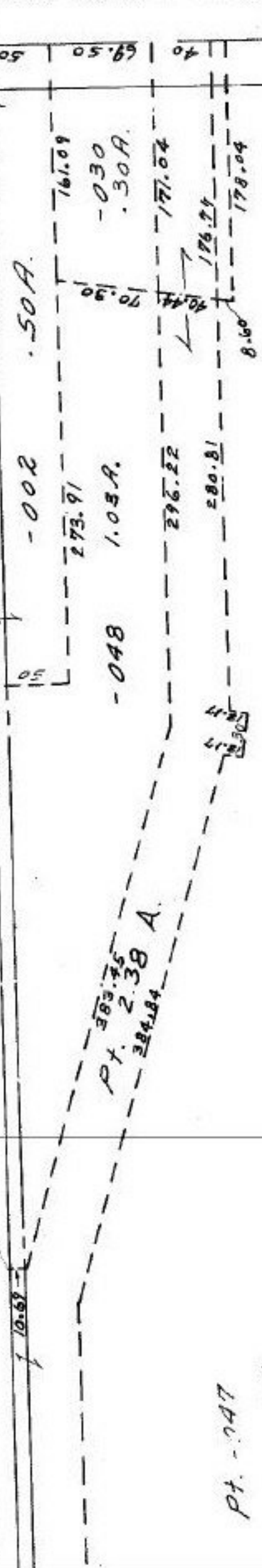


(MAP CORR ONLY)

SEE 4-B

ST. L. R. R. Pt. -04-00-008-500-001 Pt. 12.027 A



Pt. -047

Pt. 12.027 #14897

JAN 21 1983

APPROVED LORAIN CO. MAP DEPT.
DATE 11-23-82
PAGE 4
BY C. FRANCIS
VOID AFTER

4-00-016-B

Pt. -004

582.87

RD.