

SEE 4-C

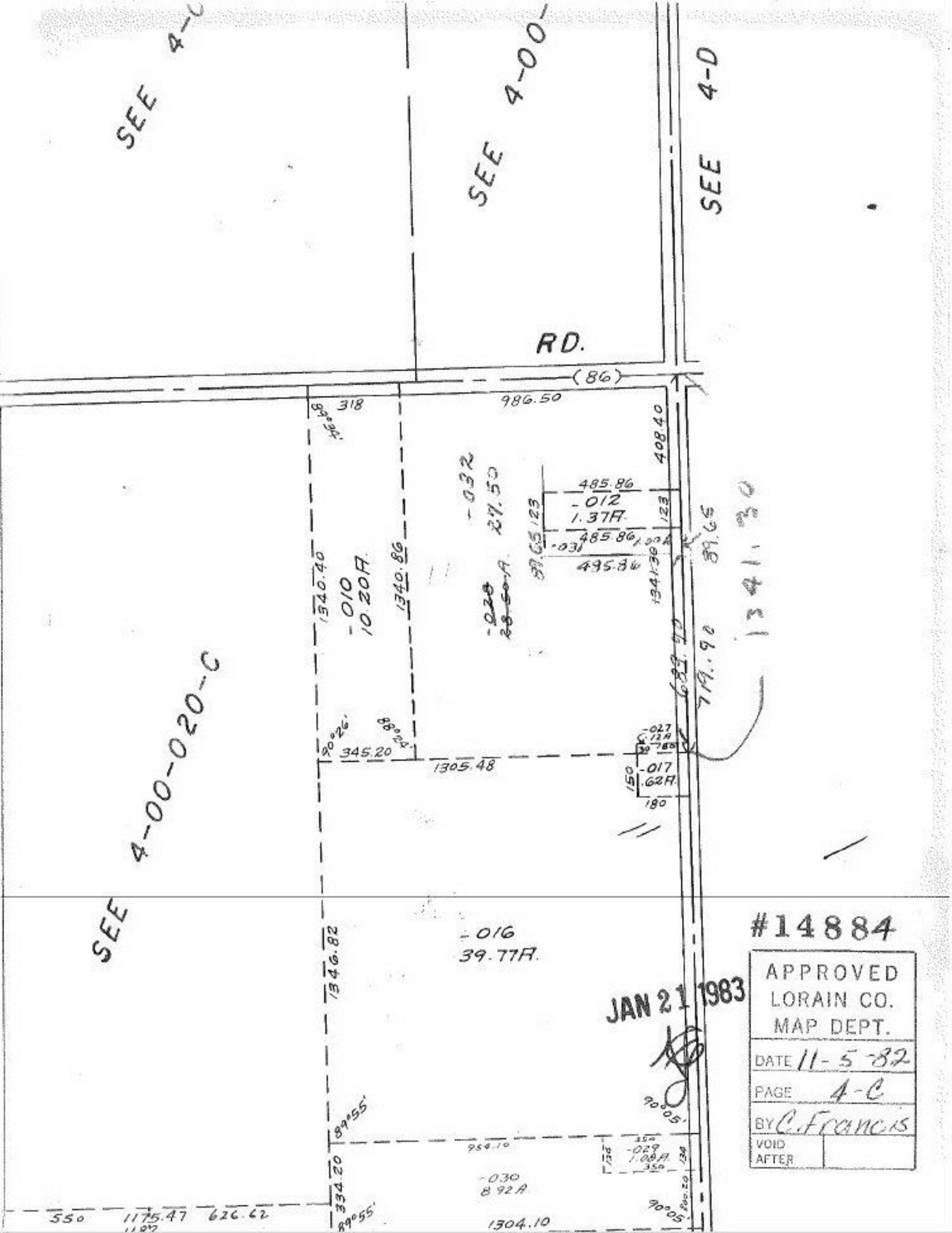
SEE 4-00-

SEE 4-D

RD.

SEE 4-00-020-C

SEE



(86)

986.50

408.40

318
1360.88

1340.40

-010
10.20F

1340.86

-032
27.50
28.50-A

485.86
-012
1.37F
485.86
495.86
37.65.23
1341.30
123

30°26'
345.20
88°24'

1305.48

150
-017
62F
180
-027
12A
785

689.70
79.90
89.65

1341.30

-016
39.77F

1346.82

89°55'

334.20

954.10
-030
8.92A

123
-029
1.00F
350

90°05'

90°05'

550
1175.47
626.62
22.29
11.87

1304.10

#14884

JAN 21 1983

APPROVED LORAIN CO. MAP DEPT.	
DATE	11-5-82
PAGE	4-C
BY	C. FRANCIS
VOID AFTER	