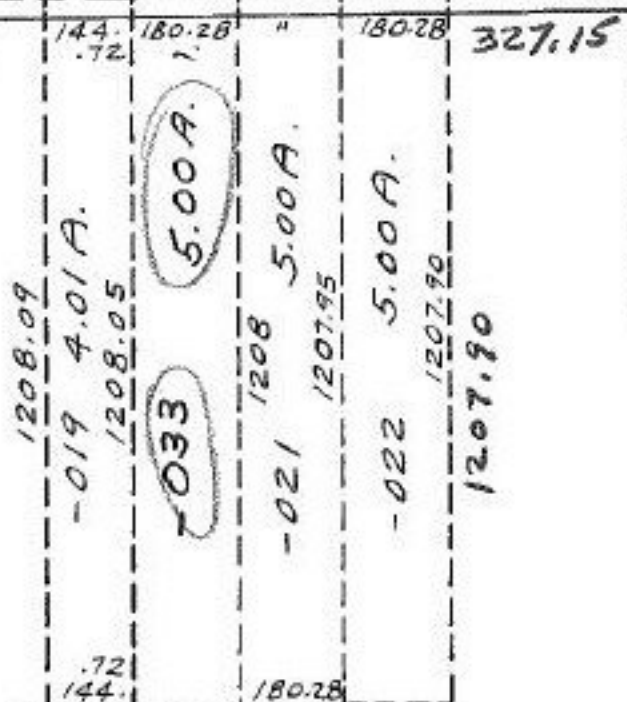


Y...A - TWINSBURG

SEE 11-00-076-A

76



705.44

2312.78

-034  
~~60.99 A.~~  
64.07 A.

(650) -001

3520.73

-032  
27.00 A.  
3508.56

1338.31

-001  
81.00 A.

#14865  
#14865  
#14865

APPROVED	
LORAIN CO.	
MAP DEPT.	
DATE	10-18-82
PAGE	1F North
BY	[Signature]
VOID AFTER	14865

FEB 4 1983

[Signature]

90°40'

1032.51  
1359.6

89°20'

1338.70