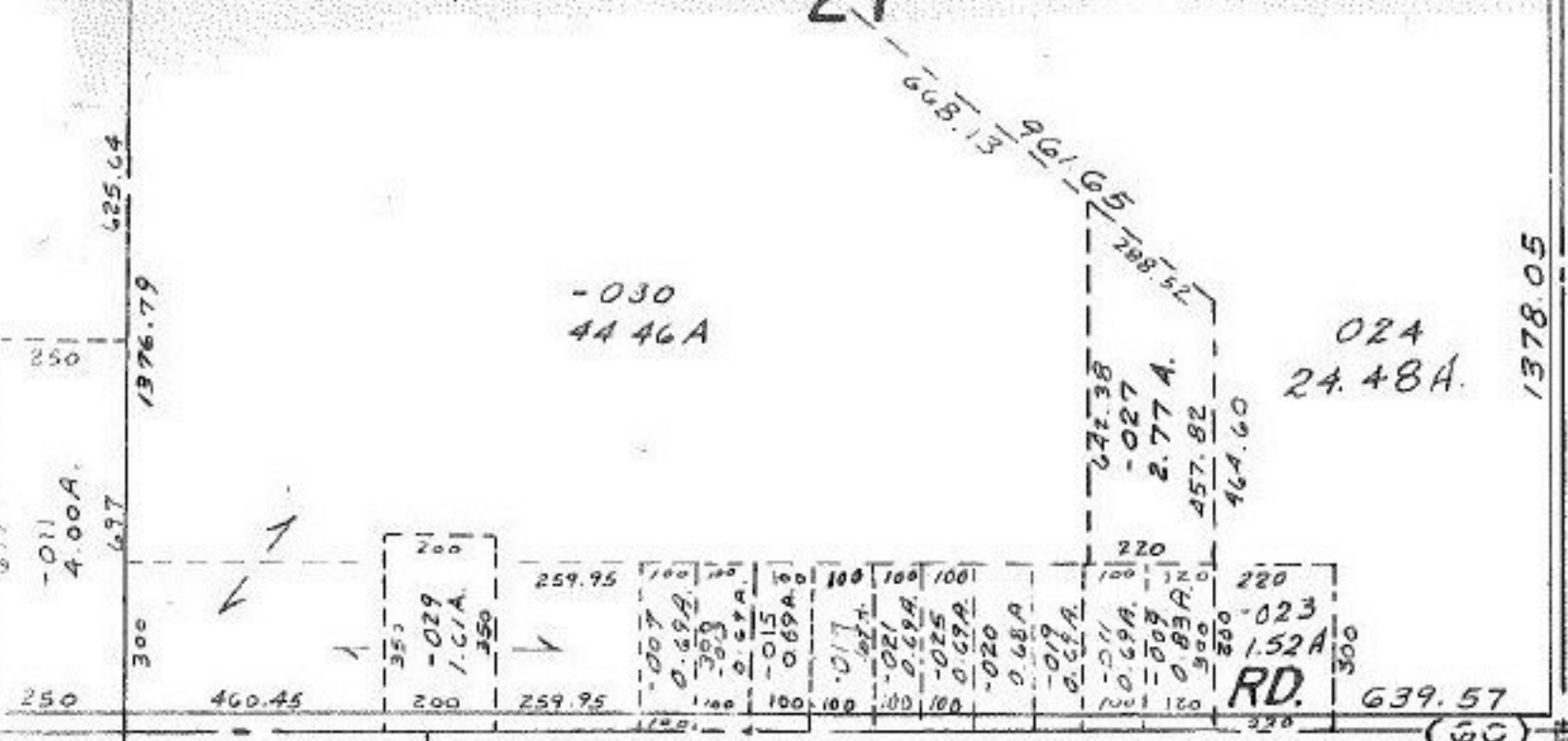


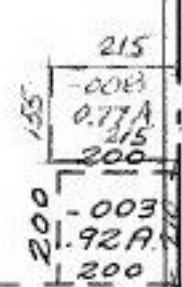
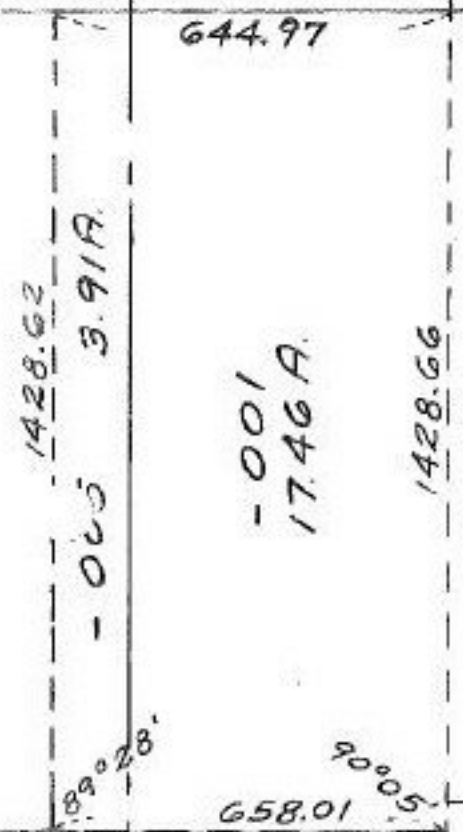
21



MAP CORRECTION ONLY
#14859

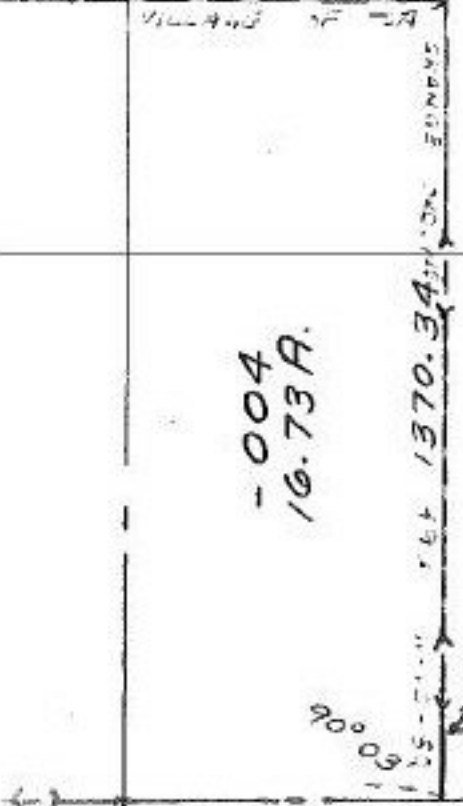
APPROVED LORAIN CO. MAP DEPT.
DATE 10.12.82
PAGE 15-C
BY T. McNair
VOID IFTER

~~-002~~
~~64.71A Dup~~
~~63.435 A.D~~
 -007
 61.77A
FEB 14 1983



~~34~~ 2047.8

SURVEY AVAILABLE BY WM. BARTON AUG. 1982



THIS CORRECTION MAP REPLACES ~~8.27.82~~
CORR. NO. 14806 IN THAT IT
SHOWS THE INTENDED
LOCATION OF -008. IT WAS
ACCOMPANIED BY REFILED
D.V. 1280/133 W/ ADDITIONAL 33.15A.
AMENDED EXCEPTION. 1234.20

-006
8.61A

NO. TRANSFER SHEET WAS NECESSARY.

