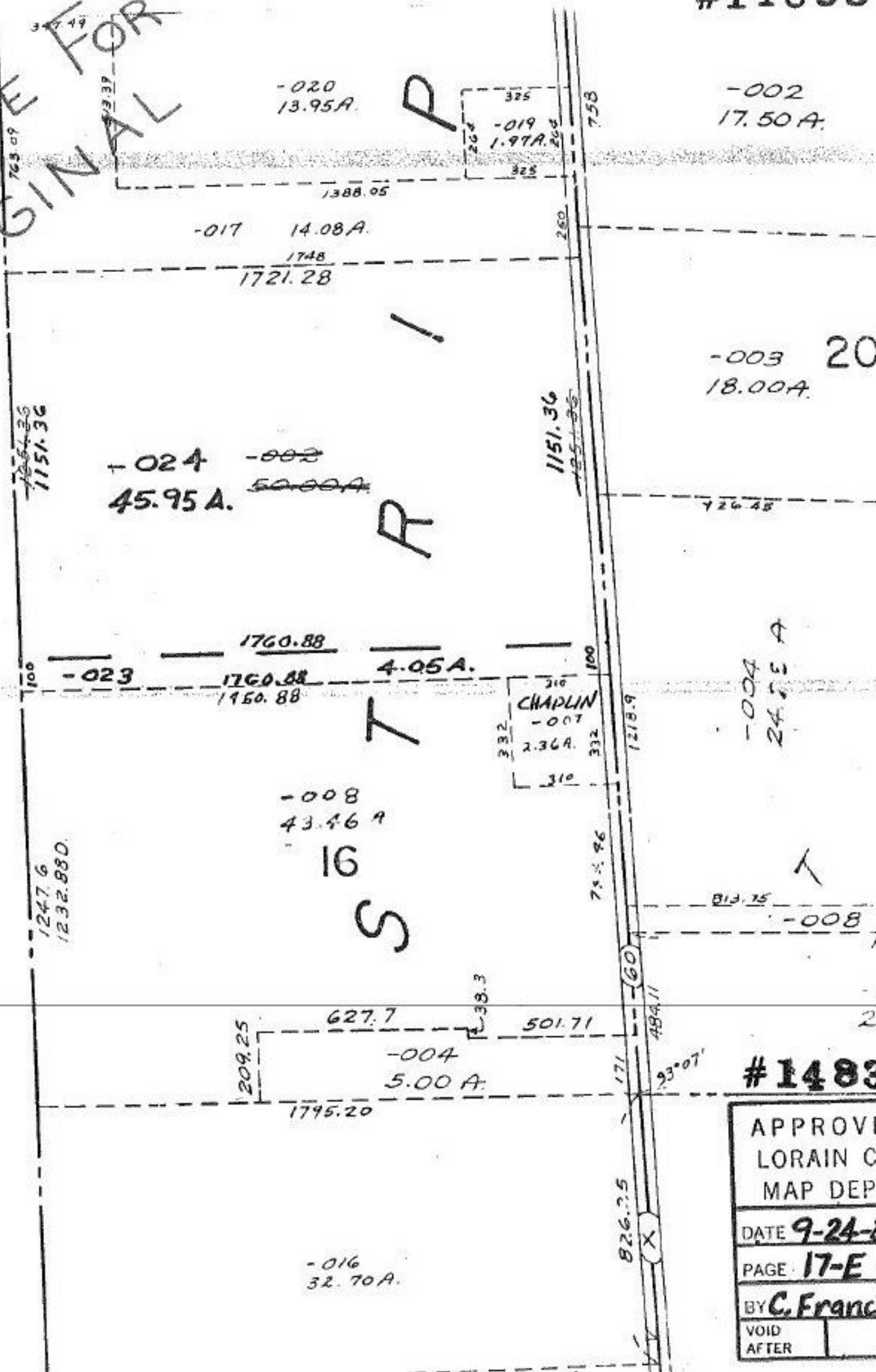


#14833

USE FOR ORIGINAL



-002  
17.50 A.

-020  
13.95 A.

-017  
14.08 A.

-024  
45.95 A.

-023  
4.05 A.

-008  
43.46 A.

16

-004  
5.00 A.

-016  
32.70 A.

-003 20  
18.00 A.

-004  
24.55 A

-008

#14833

APPROVE  
LORAIN CO  
MAP DEPT

DATE 9-24-81

PAGE 17-E

BY C. Francis

VOID  
AFTER

826.25

761.60

758

1151.36

209.25

1247.6  
1232.880

1151.36

1760.88

1760.88  
1150.88

1721.28

1388.05

763.09

37.49

63.33

325

-019  
1.97 A.

325

260

100

75.46

1218.9

60

484.11

171

93°07'

X

310  
CHAPLIN  
-007  
2.36 A.  
310

813.75

11

20