

-001
39.00A.

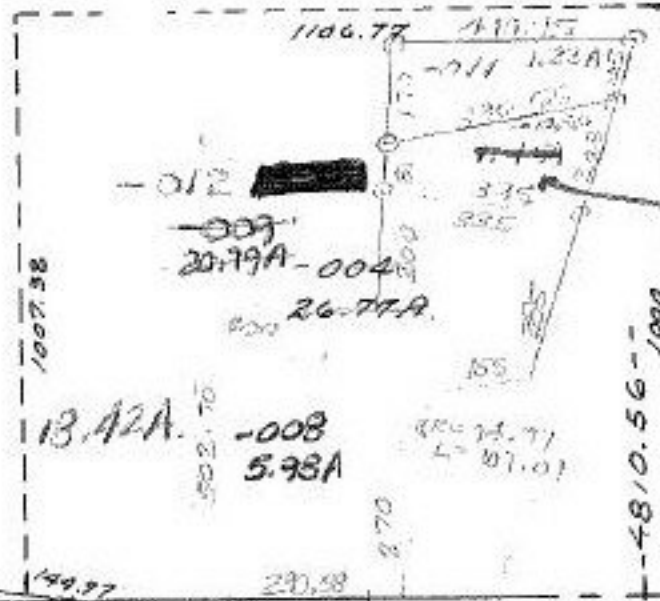
(500)
3061.30

Ft 15-00-064-500-001 Pt 34

82 -005
77.98A.

(101)

-03
116.7



13.42A.

-008
5.98A

1.15A

FEB 14 1983

#14805

APPROVED
LORAIN CO.
MAP DEPT.

DATE 8-26-82

PAGE 150 E

BY C. Francis

VOID
AFTER 15

15-E
15-00-099-A

99

15-00-099-B