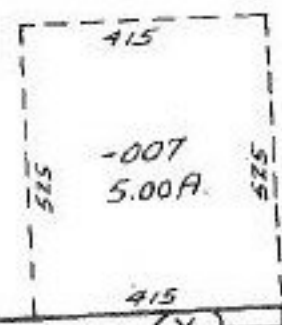


- 001  
20.00 A.

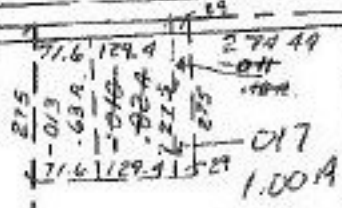
19

- 004  
86.27 A.



JONES

- 003  
51.25 A.



T

18

533.44

C

- 001  
42.00 A.

- 005  
25.00 A.

COMBINATION

#14804

A

- 006  
25.00 A.

FEB 25 1983

APPROVED
LORAIN CO.
MAP DEPT.

2125

R

DATE 8-23-82

PAGE 17-G

BY Roy C

- 001  
37.14 A.

829.9  
330

VOID  
AFTER