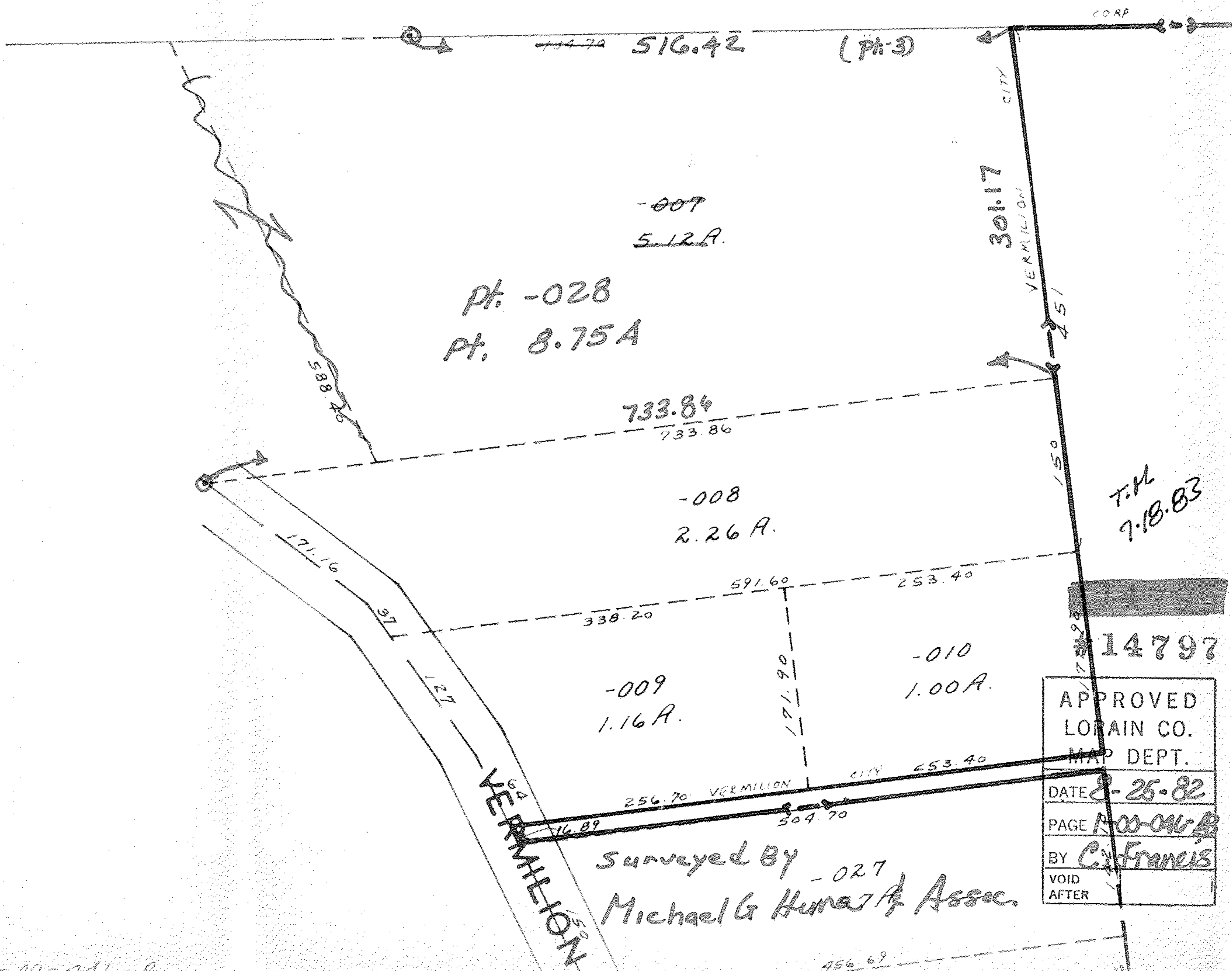


SEE I-00-035-B



Pt. -028
Pt. 8.75A

-007
5.12A.

-008
2.26A.

-009
1.16A.

-010
1.00A.

T.M.
7.18.83

14797

APPROVED
LORAIN CO.
MAP DEPT.
DATE 8-25-82
PAGE I-00-046-B
BY C. Francis
VOID AFTER

Surveyed By -027
Michael G. Hurns & Assoc.