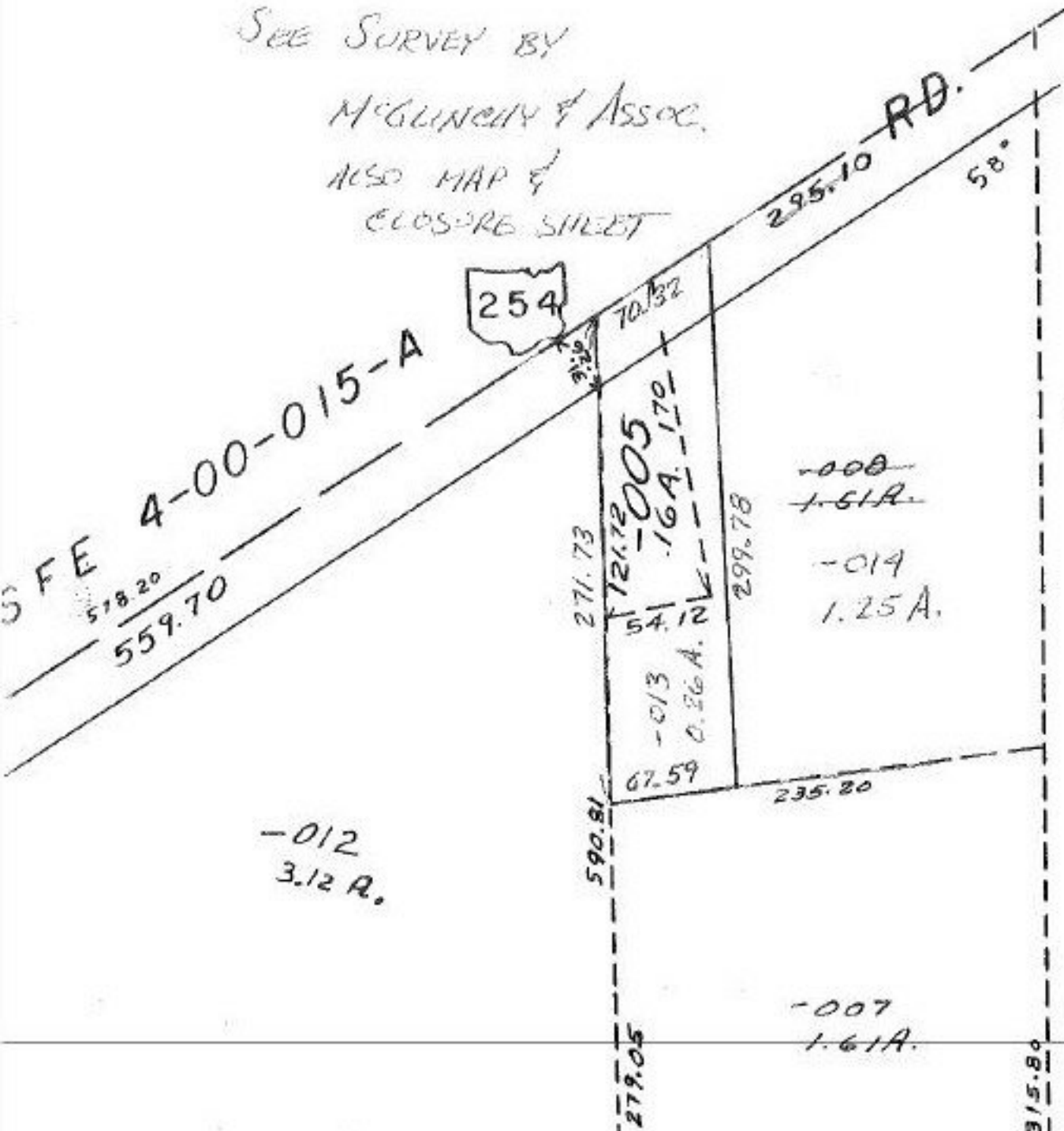


SEE SURVEY BY
 MCGLINCHY & ASSOC.
 ALSO MAP &
 CLOSE SHEET



259
 $\frac{295.10}{70.32}$
 224.78

$\frac{1.51}{.26}$
 1.25

#14781

JAN 14 1983

APPROVED
 LORAIN CO.
 MAP DEPT.
 DATE 8-20-82
 PAGE 4-00-015-E
 BY T. McVain
 VOID AFTER

