

036-006  
6.29A.

Pt. 01-00-026-000-032  
Pt. 595A.

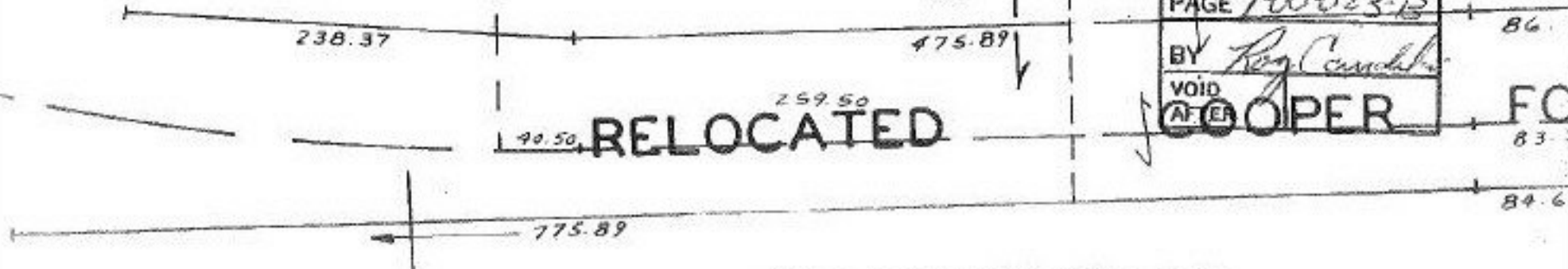
#14780

DEC 23 1982

*[Signature]*

APPROVED LORAIN CO. MAP DEPT.
DATE 8-5-82
PAGE 100023-12
BY <i>Ray Cooper</i>
VOID AFTER
COOPER

RELOCATED



Pt. 01-00-026-000-018