

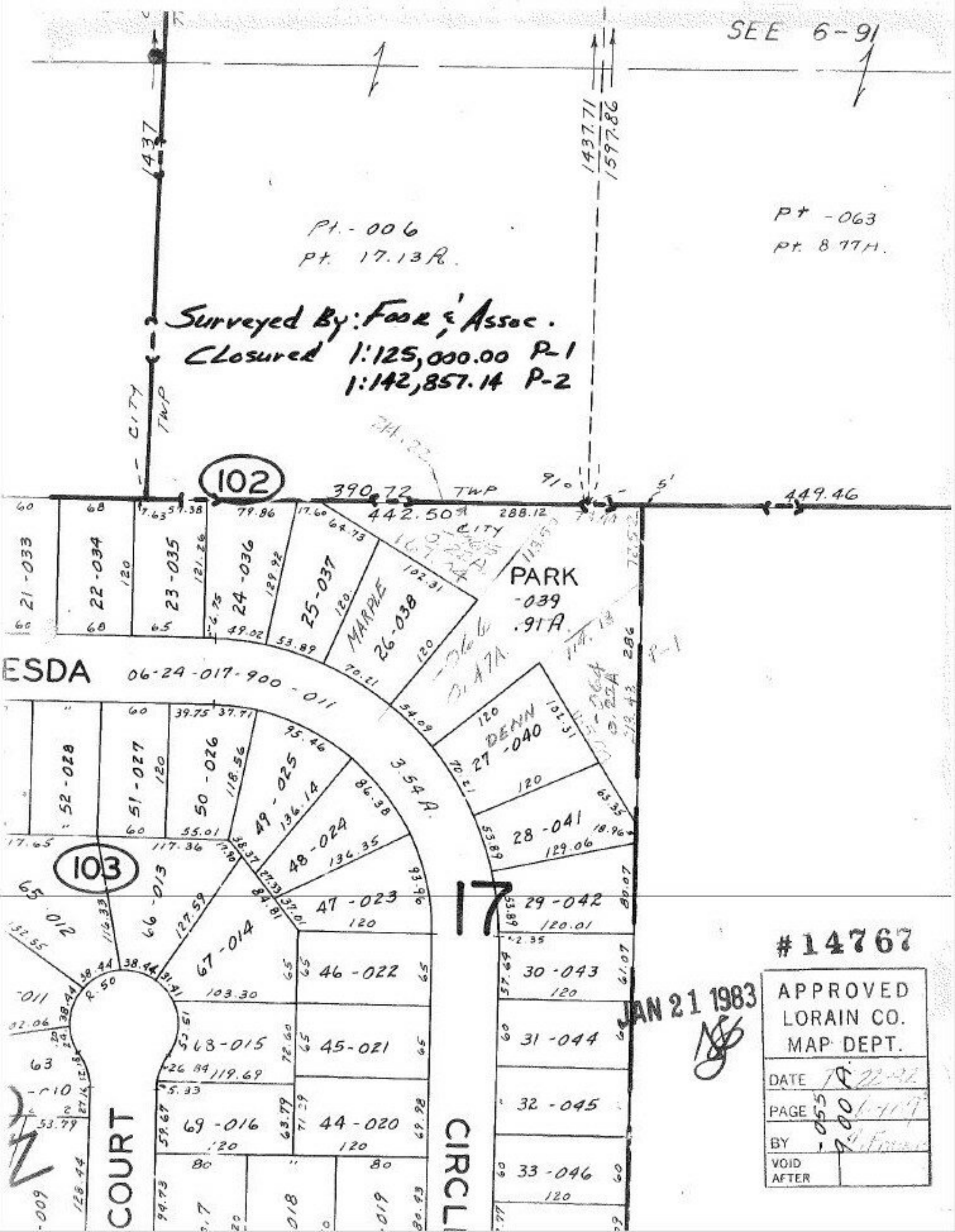
SEE 6-91

Pt. - 006
Pt. 17.13 R.

Pt - 063
Pt. 8 77 H.

Surveyed By: Fook & Assoc.

Closed 1:125,000.00 P-1
1:142,857.14 P-2



102

103

17

#14767

JAN 21 1983

APPROVED LORAIN CO. MAP DEPT.	
DATE	7-22-82
PAGE	500 of 700
BY	[Signature]
VOID AFTER	