

-033
29.44A.

-057
23.96A

SURVEYED

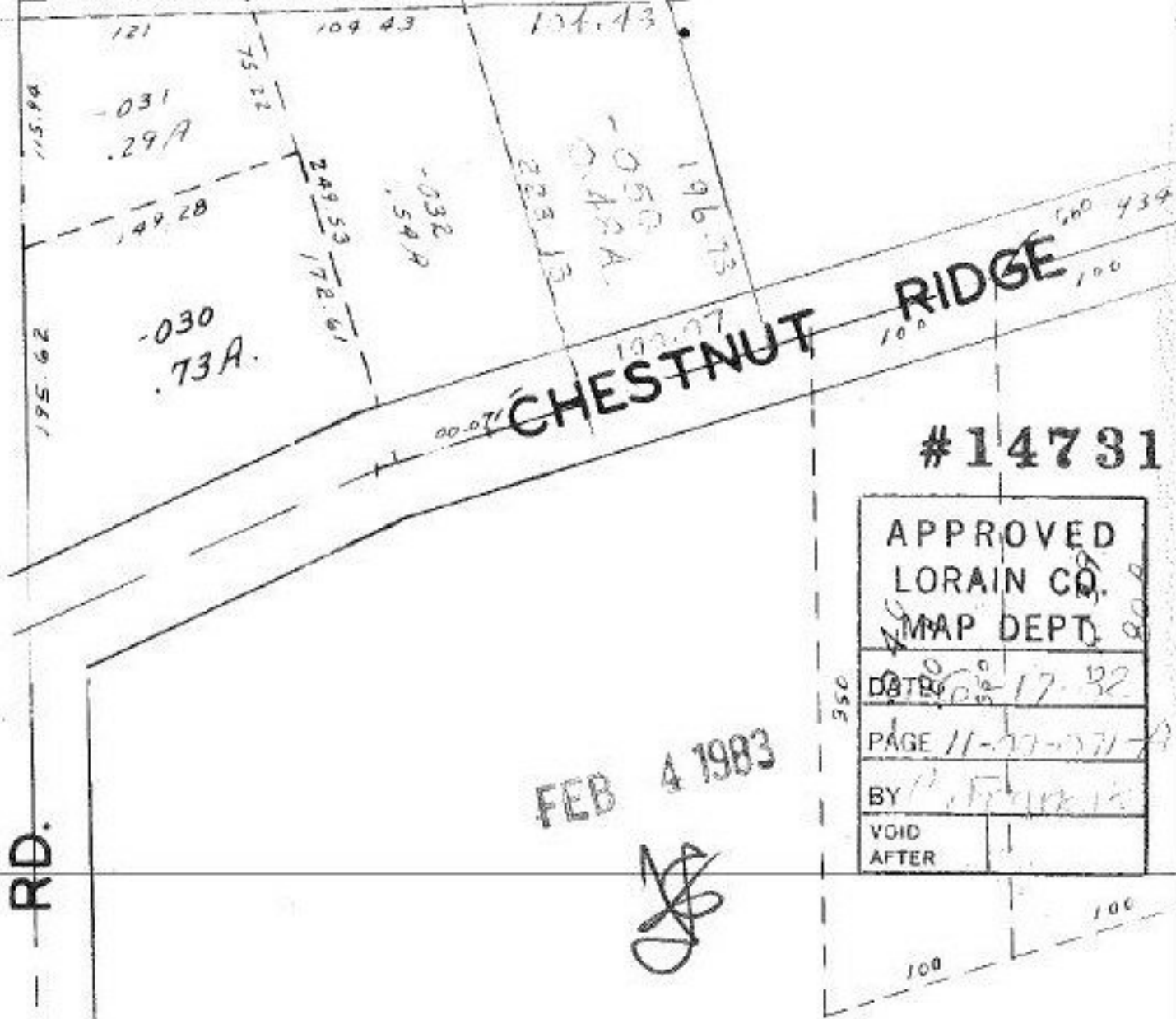
~~By:~~ By:

Toor & Assoc. Inc.

CLOSURE 1:250,000.00

SEE II-A

RD.



#14731

APPROVED
LORAIN CO.
MAP DEPT.

DATE 10-17-82

PAGE 11-27-77-8

BY [Signature]

VOID
AFTER

FEB 4 1983

[Signature]