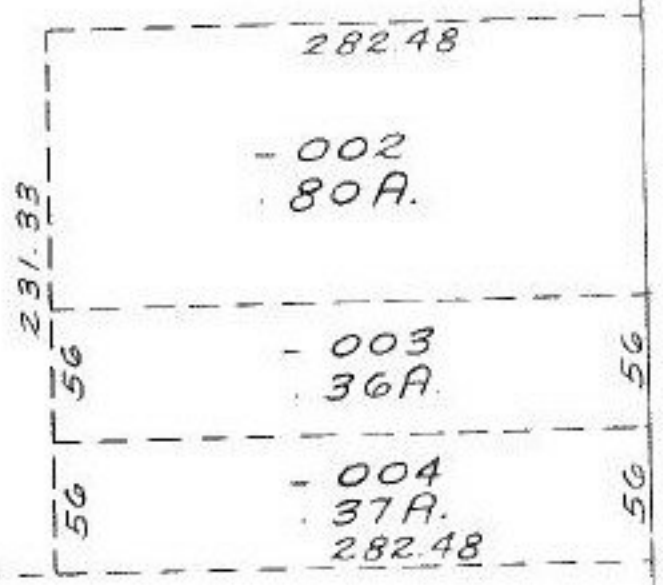


-001
5.81A.

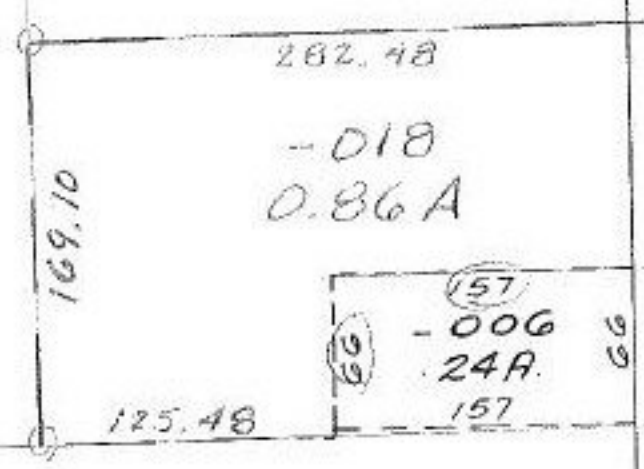
-001
4.75A.

500



SURVEYED BY JOHN POZYWAK
SEE MAP

-019 -009
4.90A 5.76A



1109.47

105

-010
8.33A.

FEB 25 1983

#14713

APPROVED LORAIN CO. MAP DEPT.
DATE 6-11-82
PAGE 1500-056
BY T. McNeil
VOID AFTER

1449.33

603.41

275.04

282.67
938.32
282.67
938.32