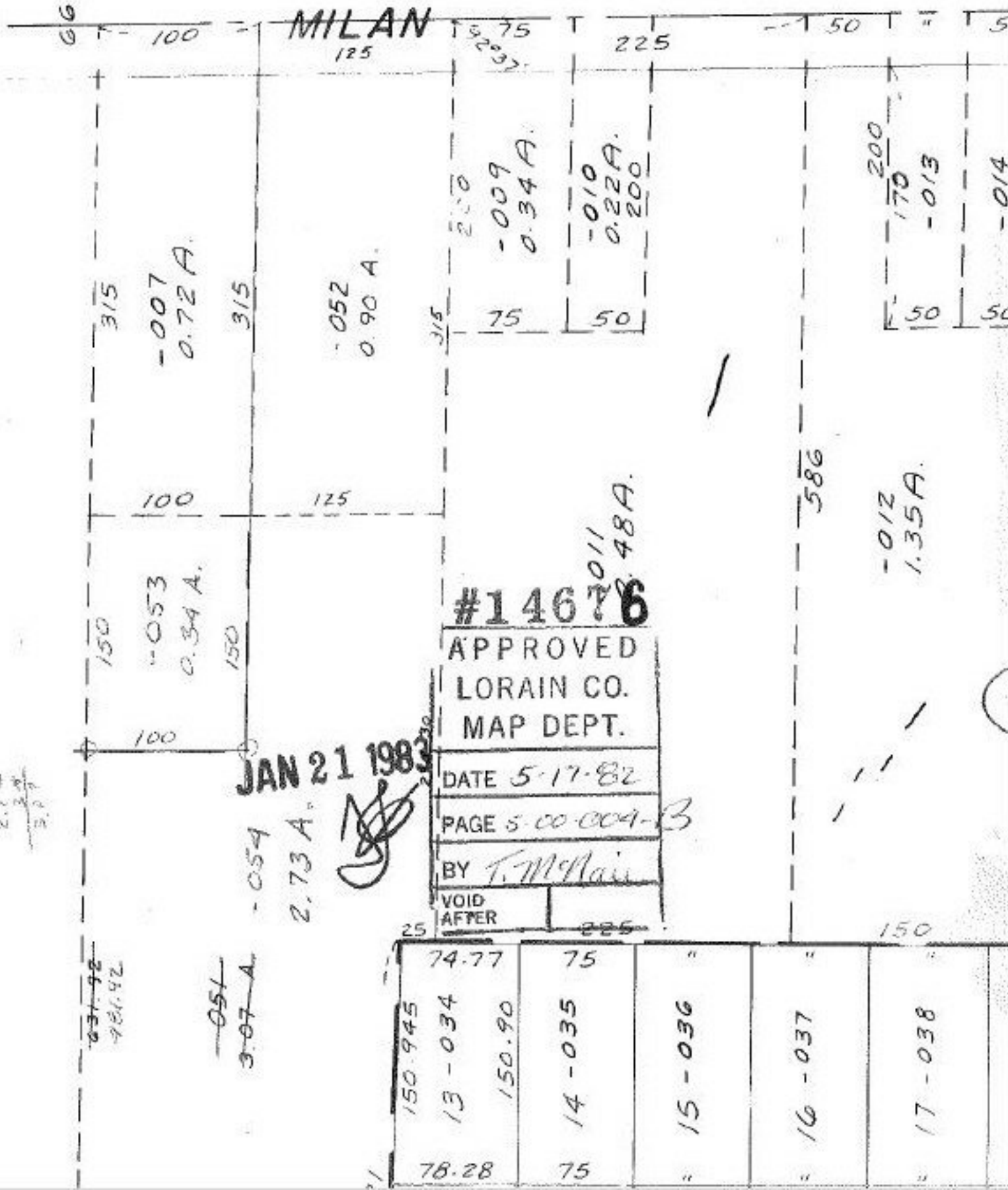


SEE 5-



307
34
2.73
3.07

~~031.92~~
981.92

~~051~~
3-07 A.

JAN 21 1983
2.73 A.
-054

#14676
APPROVED
LORAIN CO.
MAP DEPT.
DATE 5-17-82
PAGE 5-00-004-B
BY T. McNeil
VOID AFTER

150.945	74.77	75			
13-034					
150.90					
14-035					
15-036					
16-037					
17-038					
78.28	75				

200
170
-013
-014

-012
1.35A.

586