

48
58
59

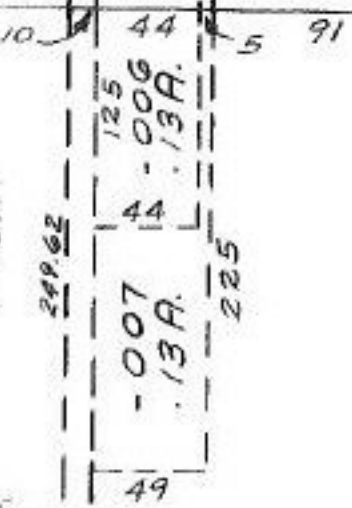
100

200

516.36

RD. 0

172



-008
1.61A.

-009
1.87A.

581

-010
.91A.

581

-011
.69A.

100

-076
1.33A.

-012
2.22A

-075
0.89A.

581

-013
1.40A.

156.58

-014
.37A.

156.58

327.50

356

140

140

68

143

218

75

122

#14661

APPROVED
LORAIN CO.
MAP DEPT.

DATE 5-4-82

PAGE 10-00-020 F

BY T. McHair

VOID
AFTER

FEB

4 1983

-015
8.03A.

PER SURVEY -
LONDON. SIMON. CAHL
& ASSOC.

218
75
143

2.22
.89
1.33
.89
2.22

SEE 10-E

River