

-024
371.63
-044
0.51A
-045
0.43A
-027
.77A
-028
.50A
-029
.50A

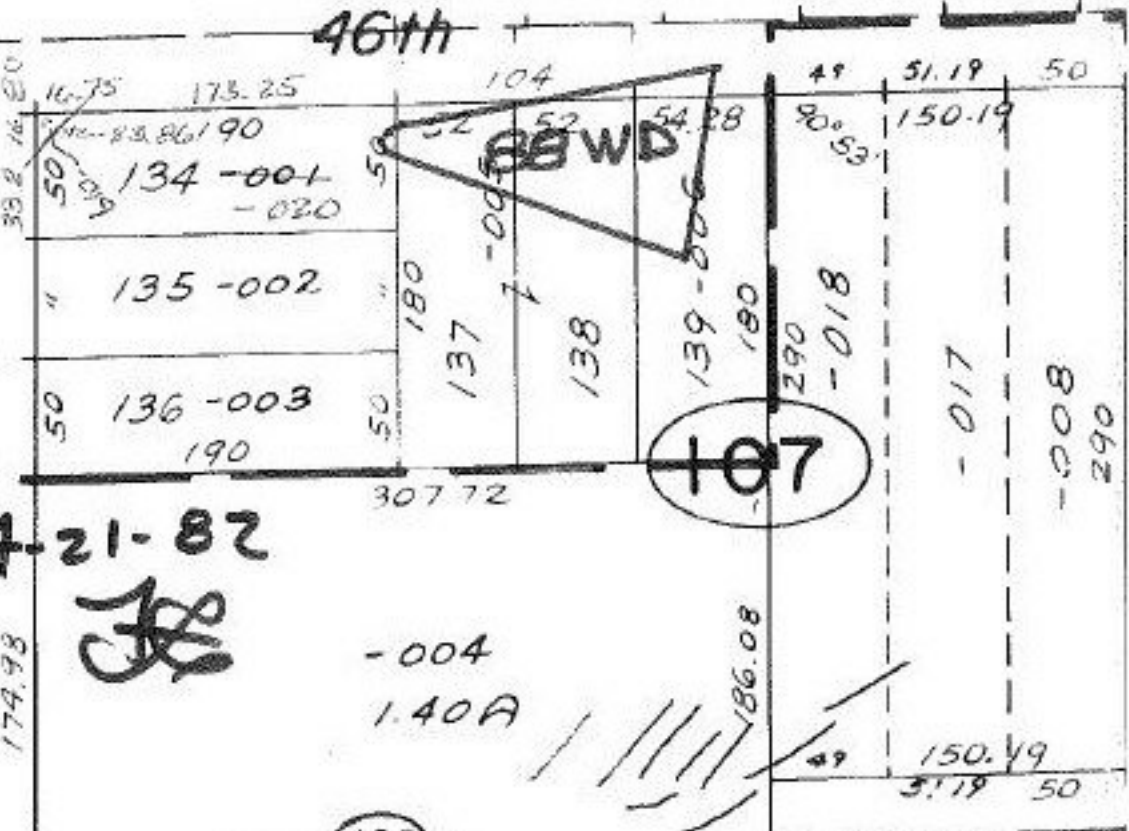
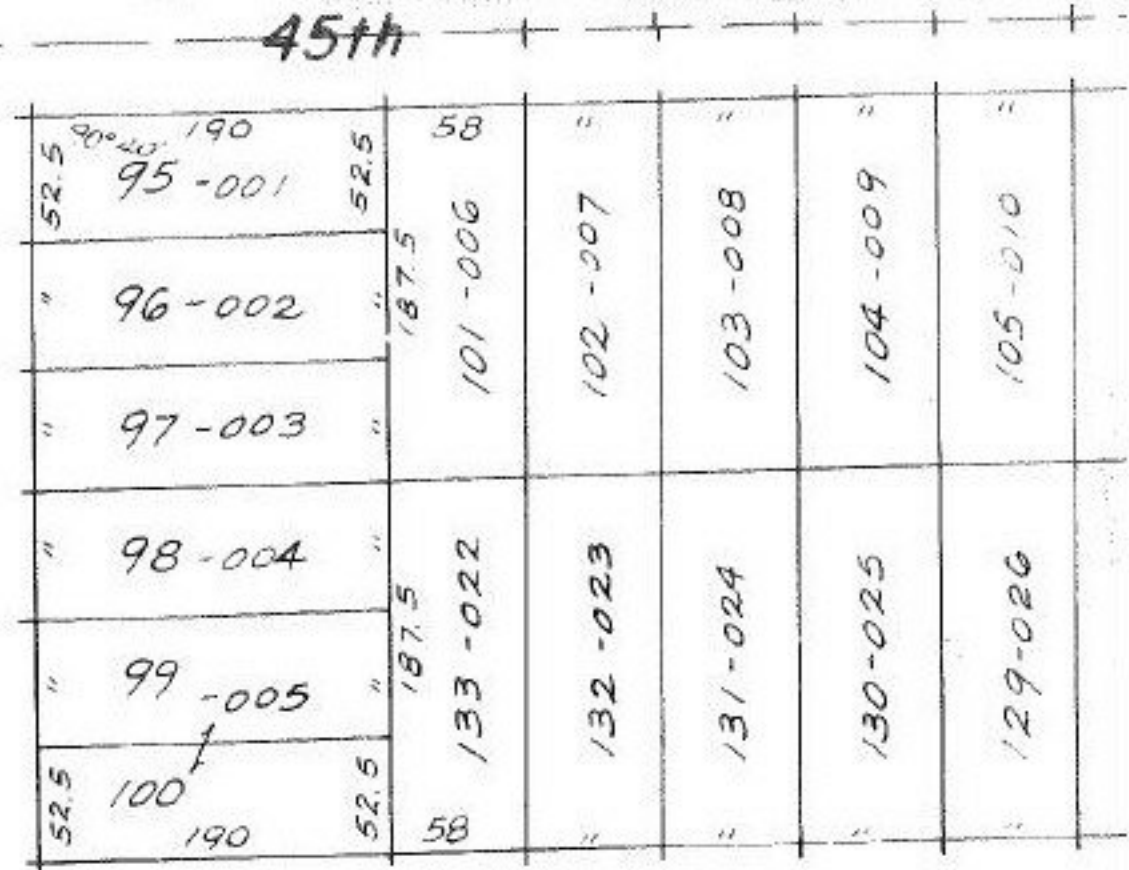
-030
.50A #14643
-031
.50A
369.2
-032
.50A
369.2
-033
.50A
-034
.59A
-035
.41A

APPROVED
LORAIN CO.
MAP DEPT.
DATE 4-20-82
PAGE 3-00 108-A
BY T. McRain
VOID
AFTER

Pt. -039
Pt. 50.66A

-037
.17A
-038
.17A

BROADWAY
PENFIELD



4-21-82
JF

