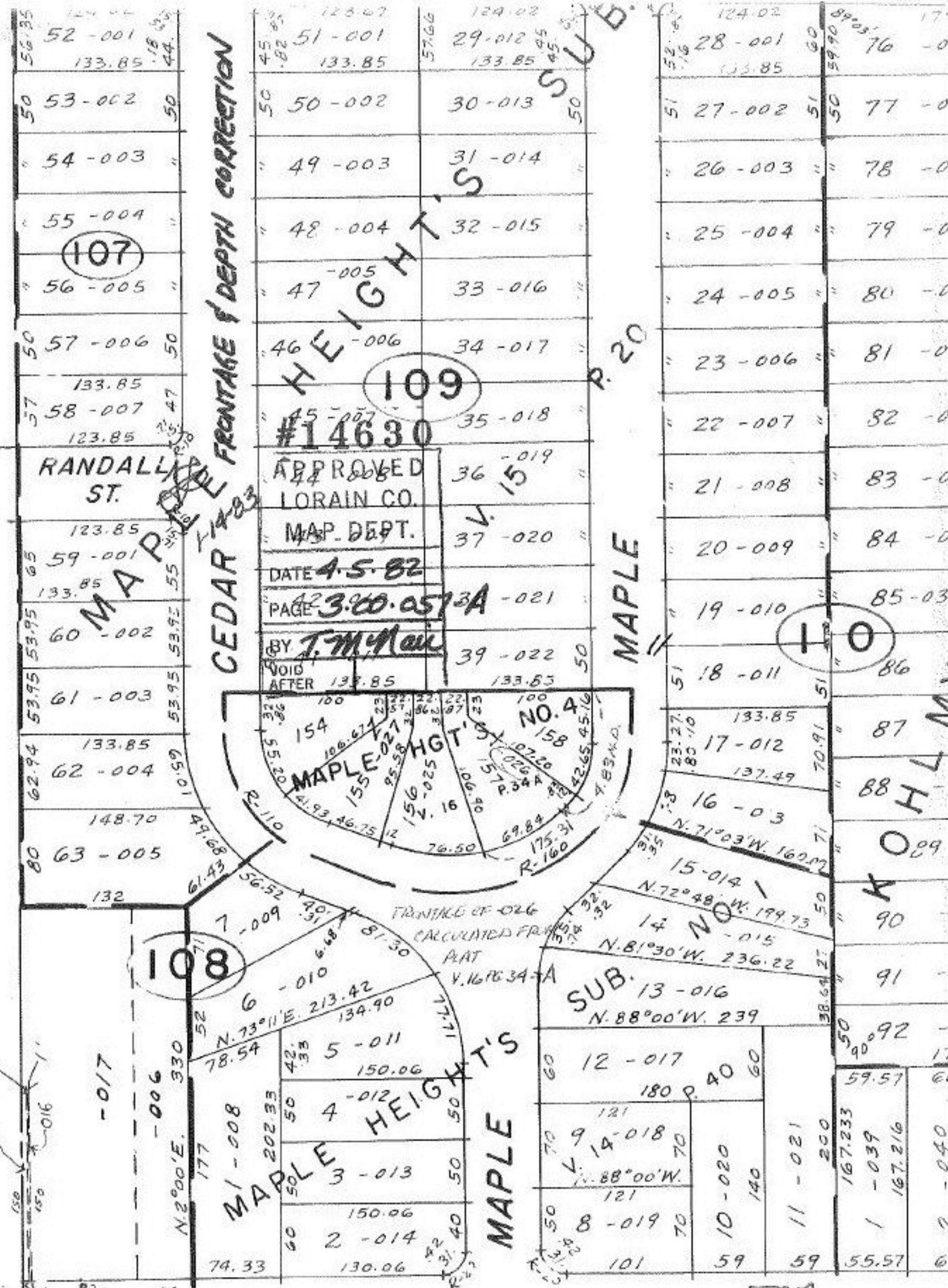


SEE 3-00-056-A



COLORADO



107

109

110

#14630

APPROVED
LORAIN CO.
MAP. DEPT.

DATE 4-5-82

PAGE 3-00-057-A - 021

BY T. M. McNeil

VOID AFTER 133.85



MAPLE HEIGHTS

MAPLE

MAPLE

MAPLE

P. 20

RANDALL ST.

CEDAR ST.

MAPLE

-017

108

-006

MAPLE

MAPLE

SUB. 13-016

12-017

9-018

8-019

10-020

11-021

-039

167.216

611