

88.42 H.

#14599 62

APPROVED
LORAIN CO.
MAP DEPT.

DATE 3-18-82

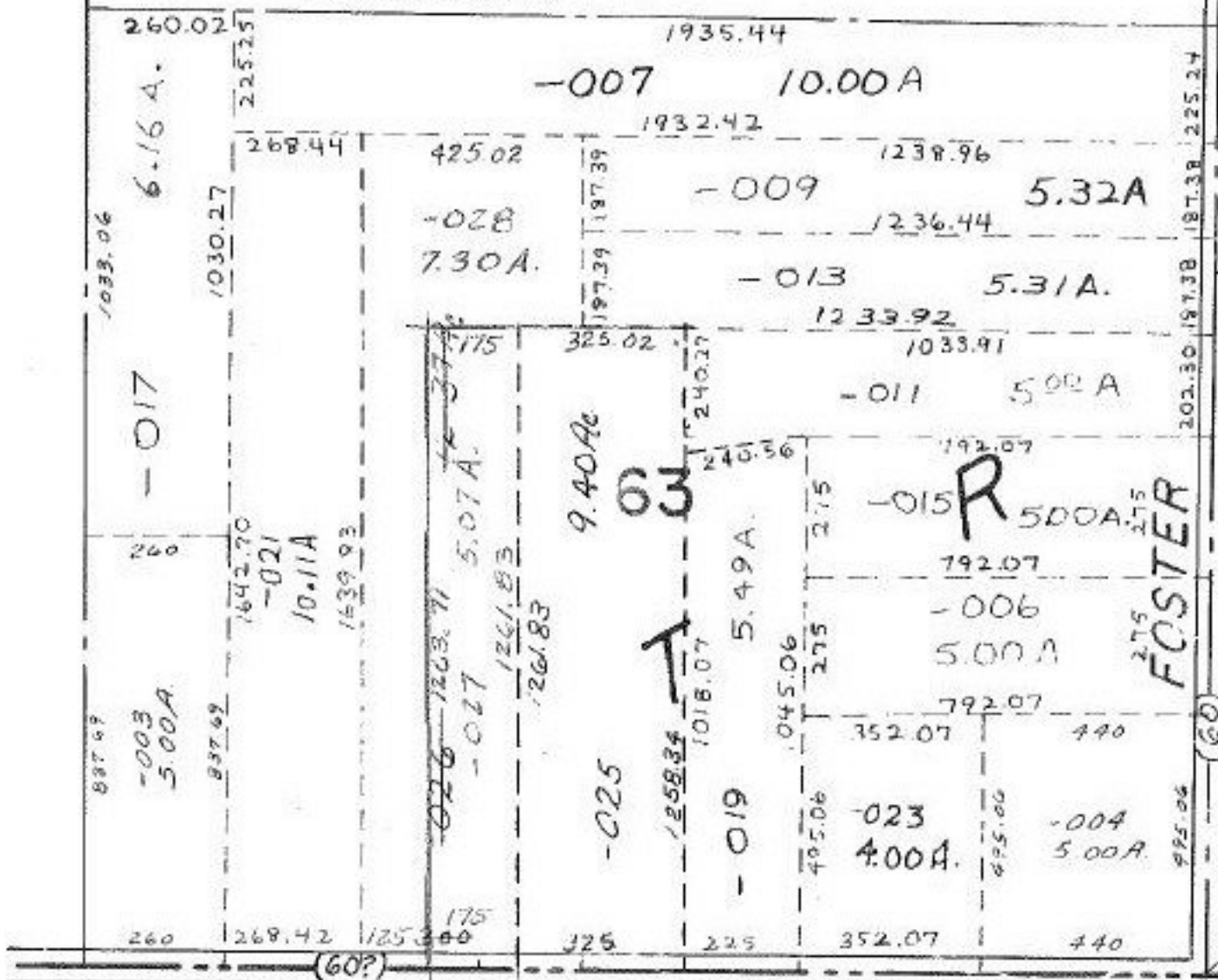
PAGE 19-H

BY F. M. Maic

VOID
AFTER

FEB 25 1983

172.90
183.41
204.10
-004
2.79 A.
346.42
132.25



SMITH

PENFIELD TWP.

SCALE: 1" = 400'