

COMBINATION

1.83  
.81  
1.38  
-----  
4.02

#14595

APPROVED  
LORAIN CO.  
MAP DEPT.

FEB 25 1983

DATE 3-18-82

PAGE 15-00-067-13

BY T. McNair

VOID  
AFTER

-018  
2.09A.

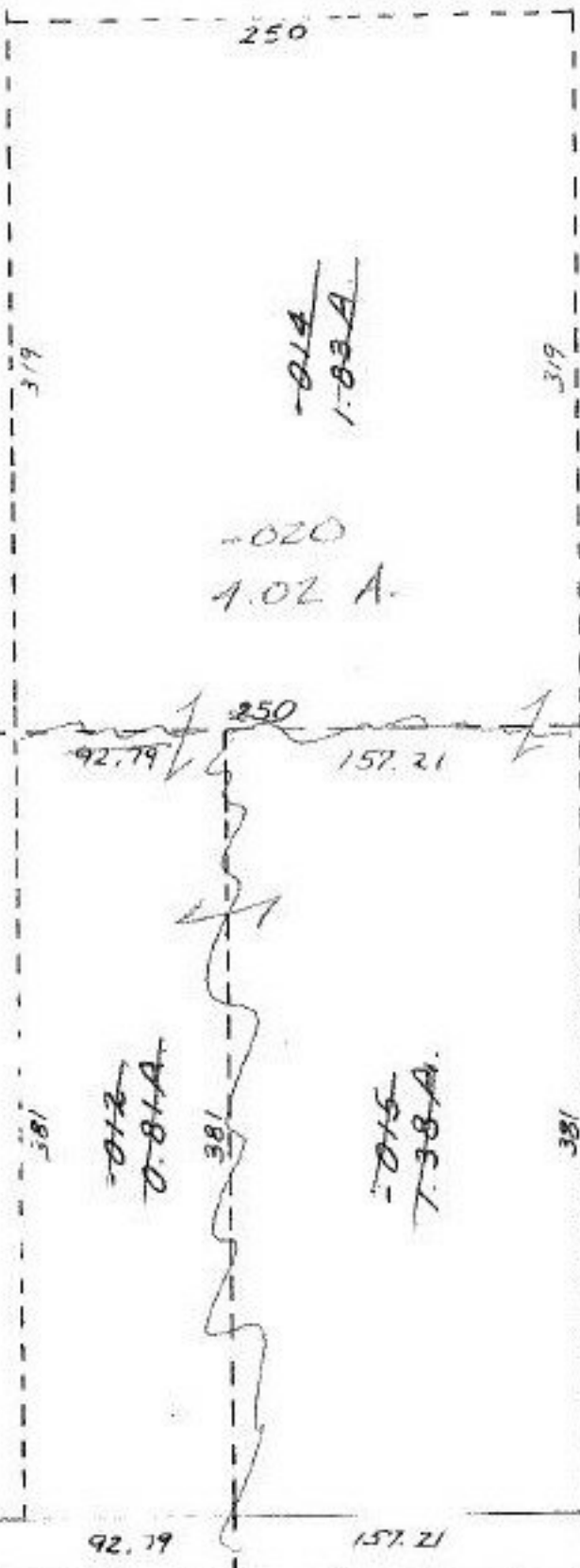
-020  
1.02 A.

-014  
1.83A.

-015  
7.38A.

-012  
0.81A.

-013  
2.66A.



E 15-G

TWP.