

- 048
9.71A.

~~044~~
~~10.40 AC~~

#14589

APPROVED
LORAIN CO.
MAP DEPT.

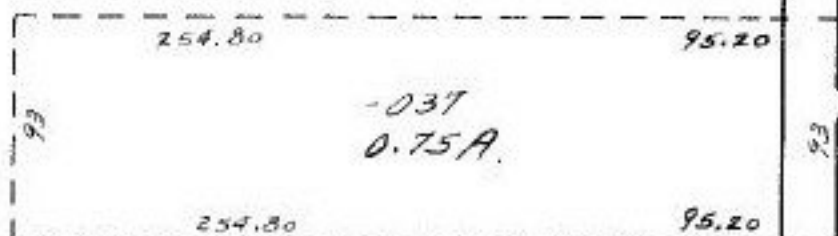
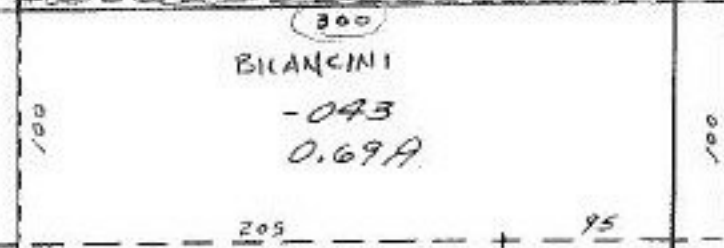
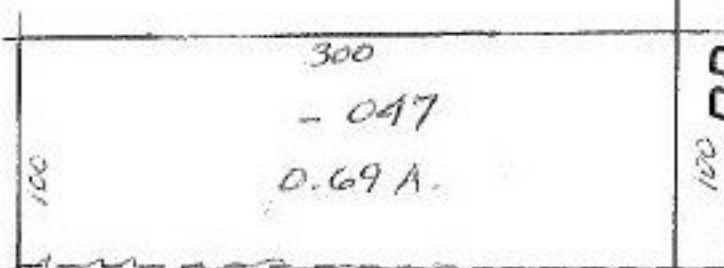
DATE 3-16-82

PAGE 9-00-004-A

BY T. McNeil

VOID
AFTER

JAN 14 1983



50

RD.

100

100

1979

95

95

95.2

156

- 026
0.35 A.