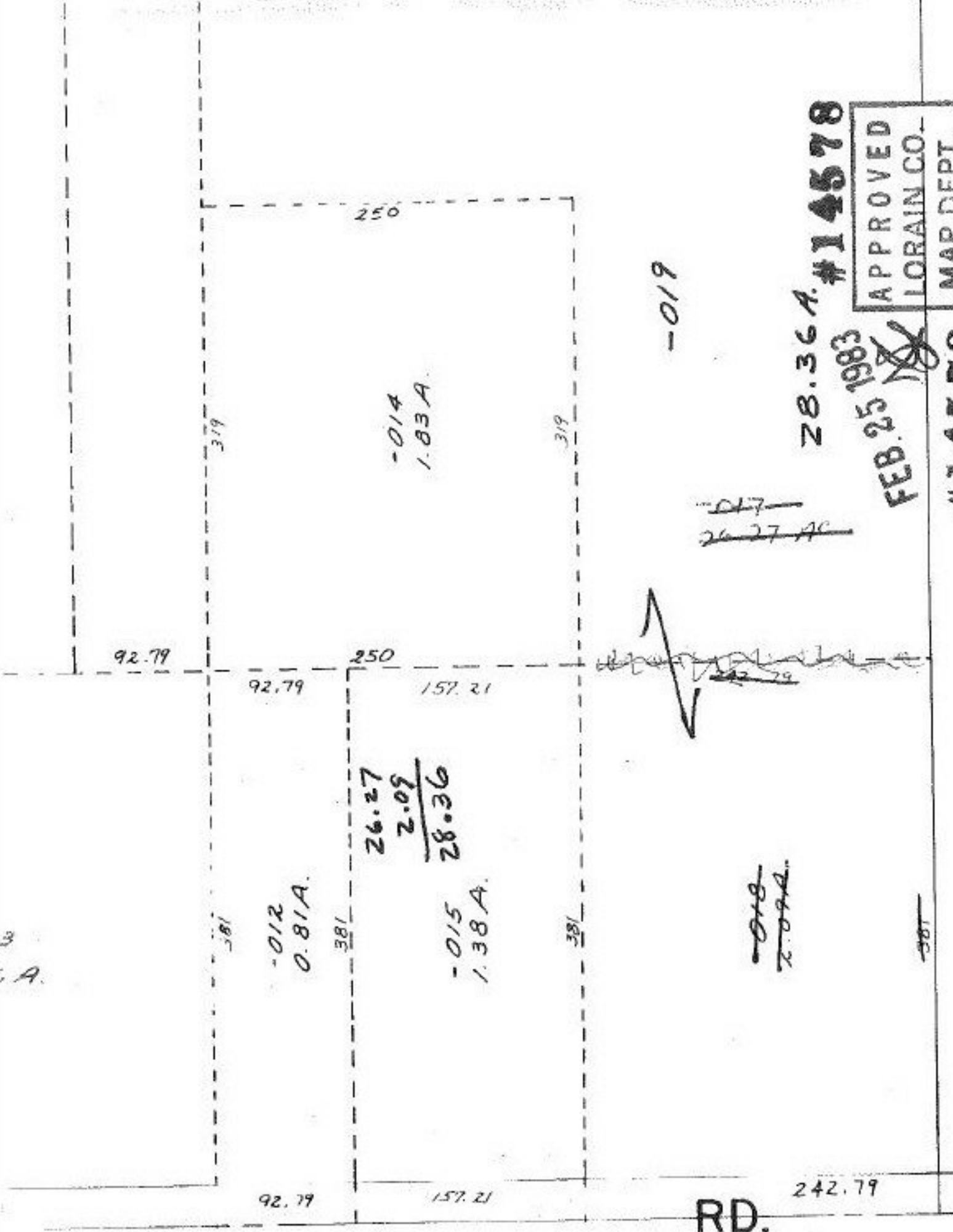


G

A.



-019

~~017~~
~~26.27 AC~~

~~018~~
~~2.09A.~~

28.36 A. #14578

FEB. 25 1983

#14578

APPROVED	
LORAIN CO.	
MAP DEPT.	
DATE 3-11-82	
PAGE 15-00-067B	
BY <i>J. J. [Signature]</i>	
VOID AFTER	14578

#14578