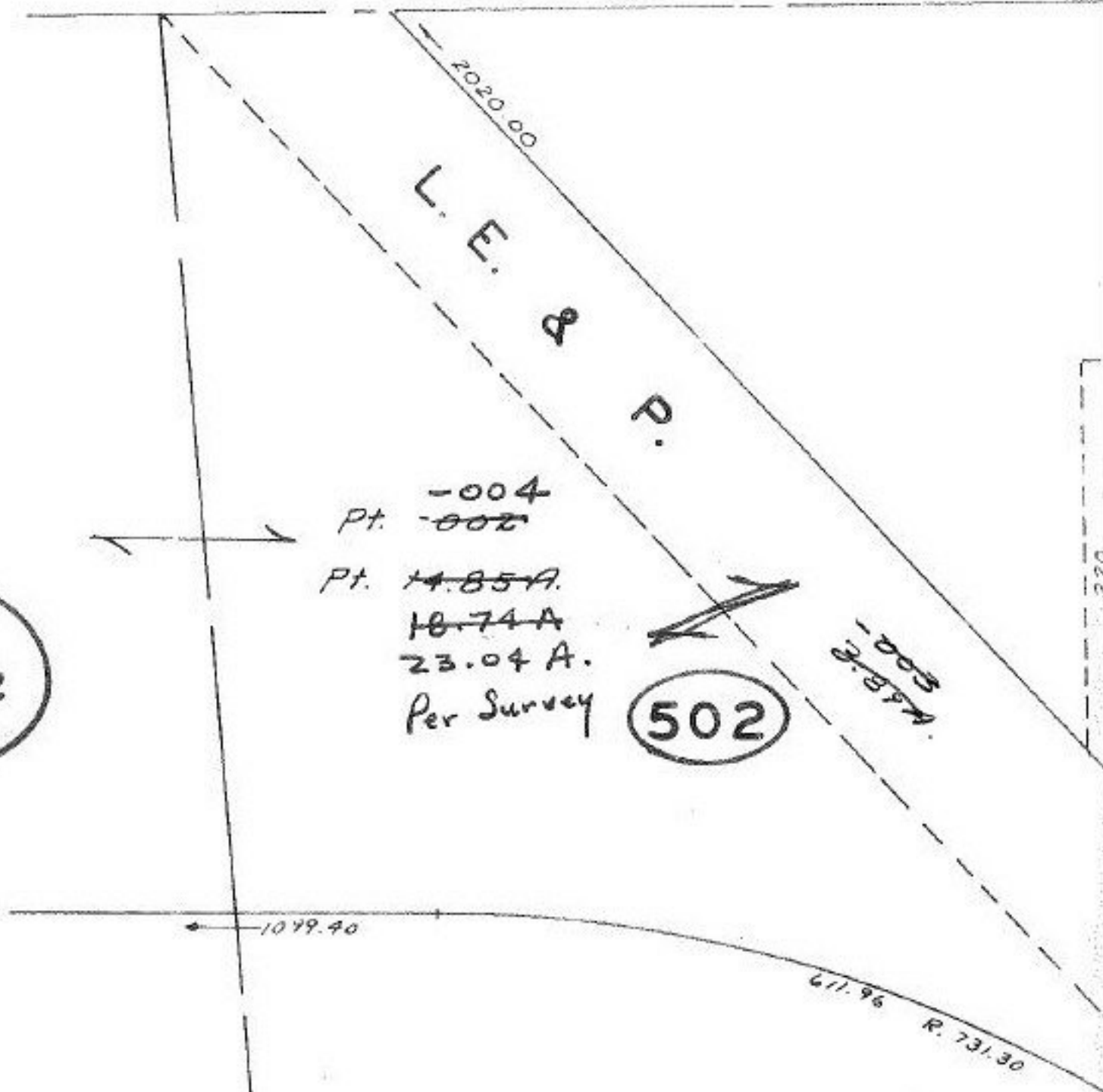


Comb  
+  
Ac. CORR



L.  
#14561 &

APPROVED	
LORAIN CO.	
MAP DEPT.	
DATE 3-3-82	
PAGE 3-00-014B	
BY <i>[Signature]</i>	
VOID	
AFTER	

W.  
V.  
Pt. -002  
Pt. 17.27A.

1-1483  
*[Signature]*

50

KFF