

-001
39.00A.

500
306730
P. 15-00-064-520-001 P. 3495

82

FEB 14 1983

101

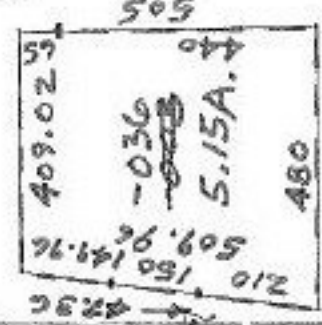
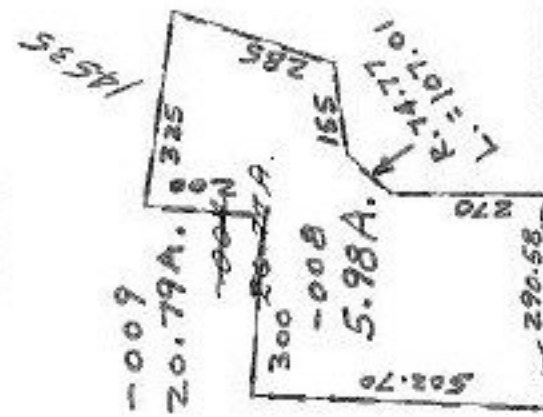
83

-007
-005
-004
-033
+6.73A.
111.58A.

#14535

APPROVED
LORAIN CO.
MAP DEPT.
DATE 2-16-82
PAGE 15-E
BY <i>J. DeLaney</i>
VOID AFTER 1/315

[Signature]



#14536

APPROVED
LORAIN CO.
MAP DEPT.
DATE 2-16-82
PAGE 15-E
BY <i>J. DeLaney</i>
VOID AFTER 1/4536

#14536

SOMAL