



-106
1.04A.

126

Pt. - 115

Pt. 11.71A.
11.40A.

14532

APPROVED LORAIN CO. MAP DEPT.	
DATE 2-12-82	
PAGE 10-00-006-C	
BY <i>[Signature]</i>	
VOID AFTER 14532	

14532

FEB 4 1983

[Signature]

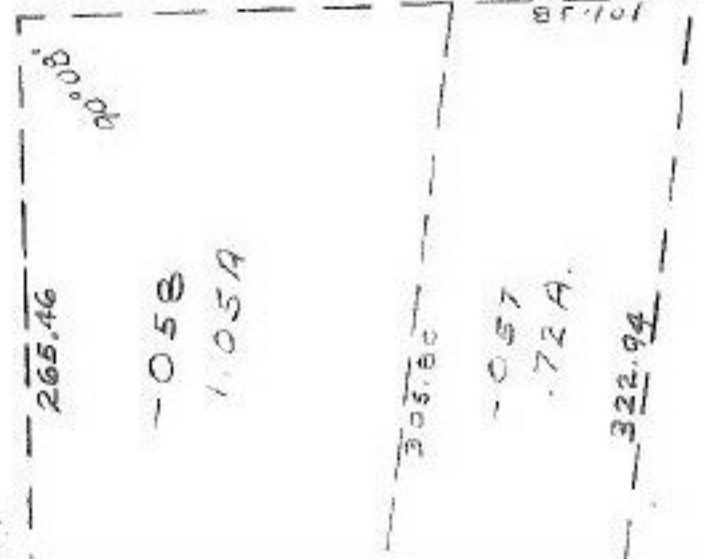
FEB

459.09

458.6

-018
4.19A

552.72
552.72



-058
1.05A

-057
1.72A

020