

129.

2677

89°47'  
60

2626.80

89°18'

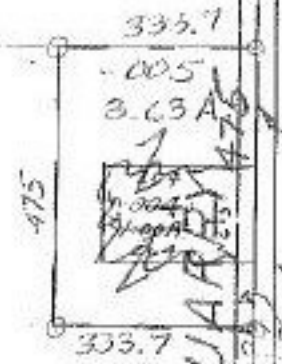
#14526

APPROVED LORAIN CO. MAP DEPT.
DATE 2-16-82
PAGE 9-A
BY T. McNeil
VOID AFTER

41

-003  
157.39 A.  
-006  
154.67 A.

JAN 14 1983  
*[Signature]*



1606.50

2688.50

2692.8

3:17.1

60  
90°08'

GARFIELD

2584.56

608  
700.00  
90°08'

RUSSIA TWP.

SCALE: 1" = 400'

Copyright 1963

5-1-80

9-A