

JAN 8 1902

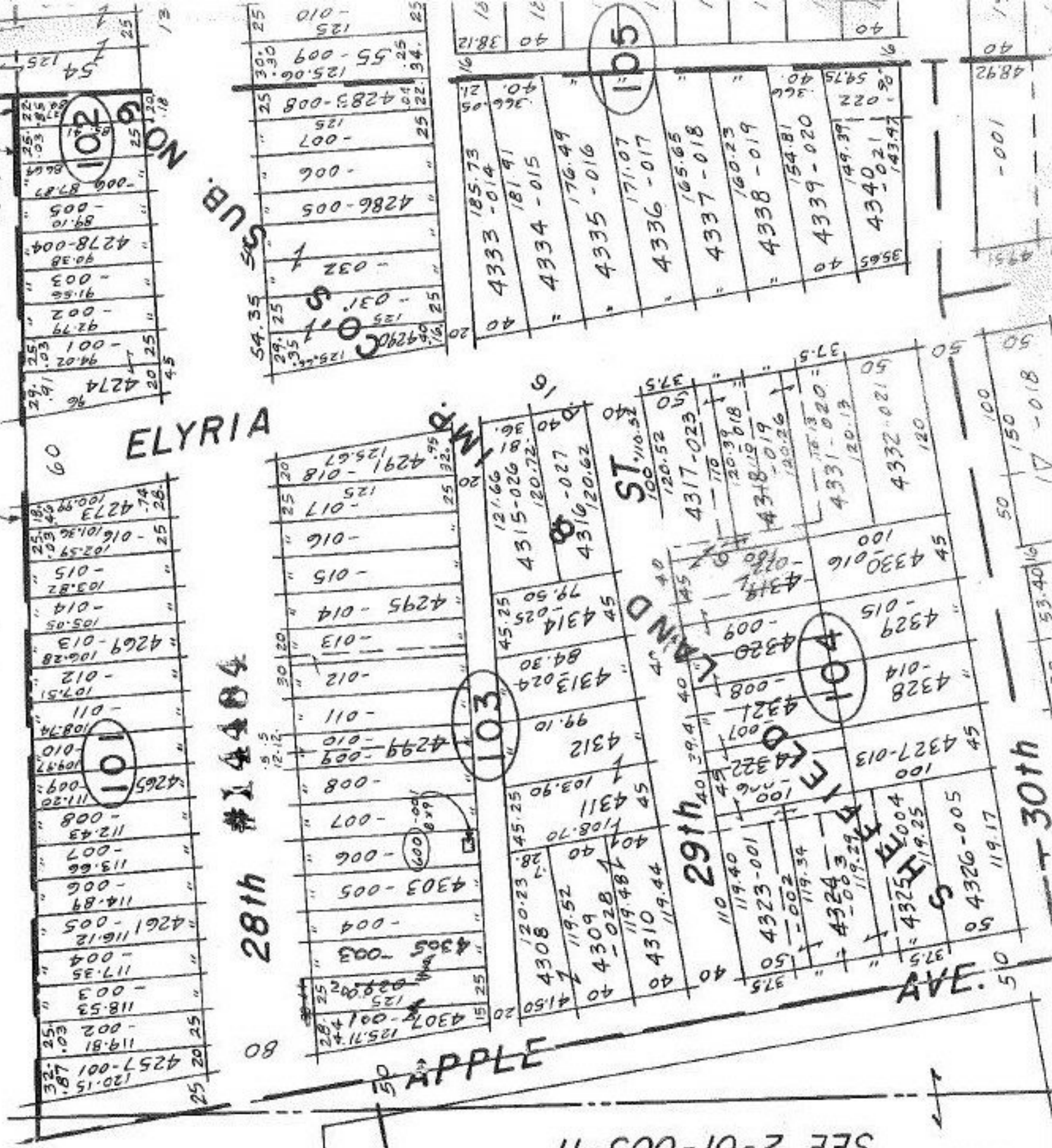
#14484

APPROVED
LORAIN CO.
MAP DEPT.
DATE 1-4-82
PAGE 3-00-078A
BY <i>[Signature]</i>
VOID AFTER 14484

ROS. PLAT

P 22

SEE 2-01-003-H



ELYRIA

#14484
28th

APPLE

29th

30th

SEE 2-00-093-B

102

101

103

LAND ST.

105

SUB. 54.35

DATE 1-4-82

PAGE 3-00-078A

BY *[Signature]*

VOID AFTER 14484