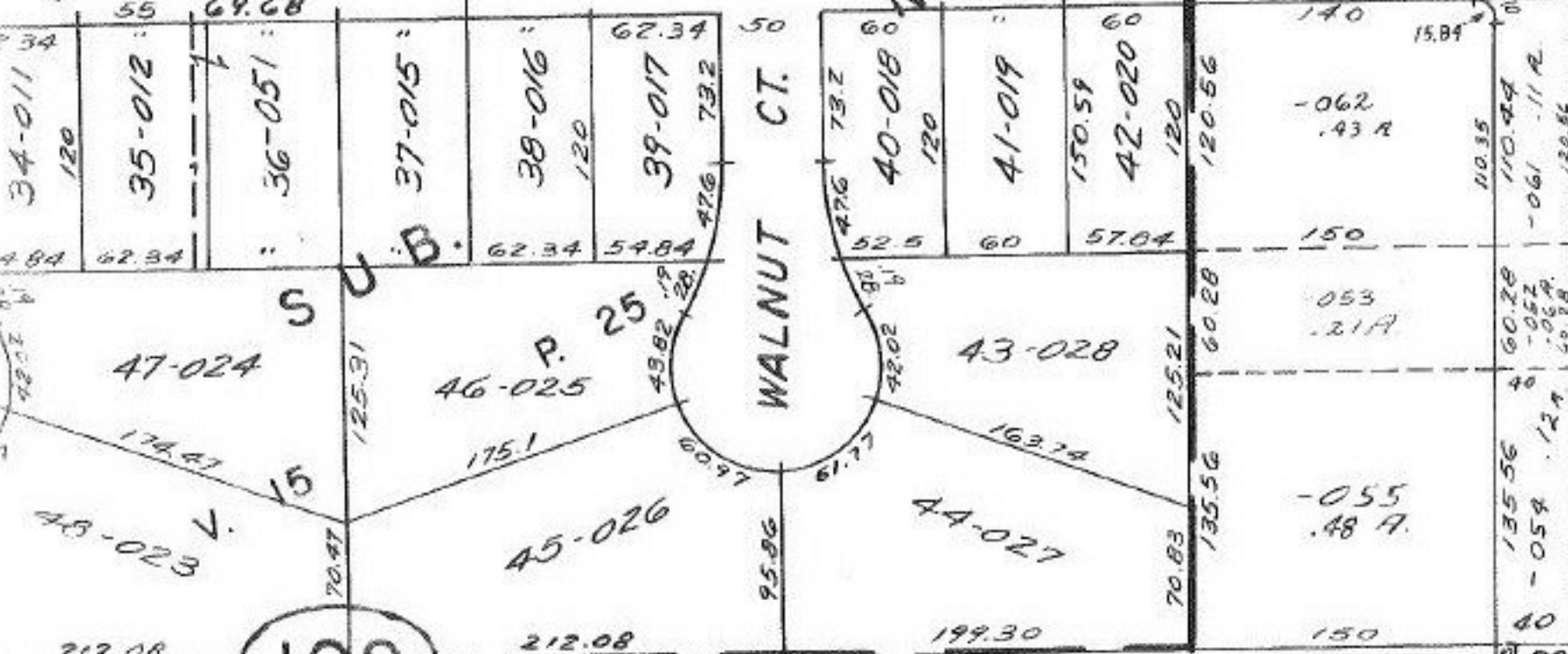


(MAP CORRECTION ONLY)



THESE PARCELS WERE NEVER CORRECTED ON MAP WHEN CORRECTION WAS PUT THROUGH ON 11-14-79. ORIGINAL SPLIT NO. WAS #13219.

-061
3.81A.

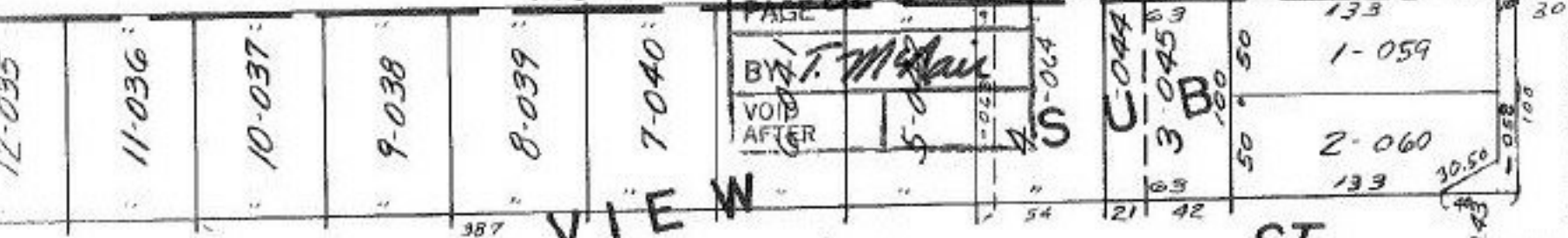
#14474

APPROVED
LORAIN CO.
MAP DEPT.

DATE 12-14-81

T.M.
1.5.82

PAGE 02-02-015-B
BY T.M. [Signature]
VOID AFTER 5-0-82



SEE 2-01-006-G