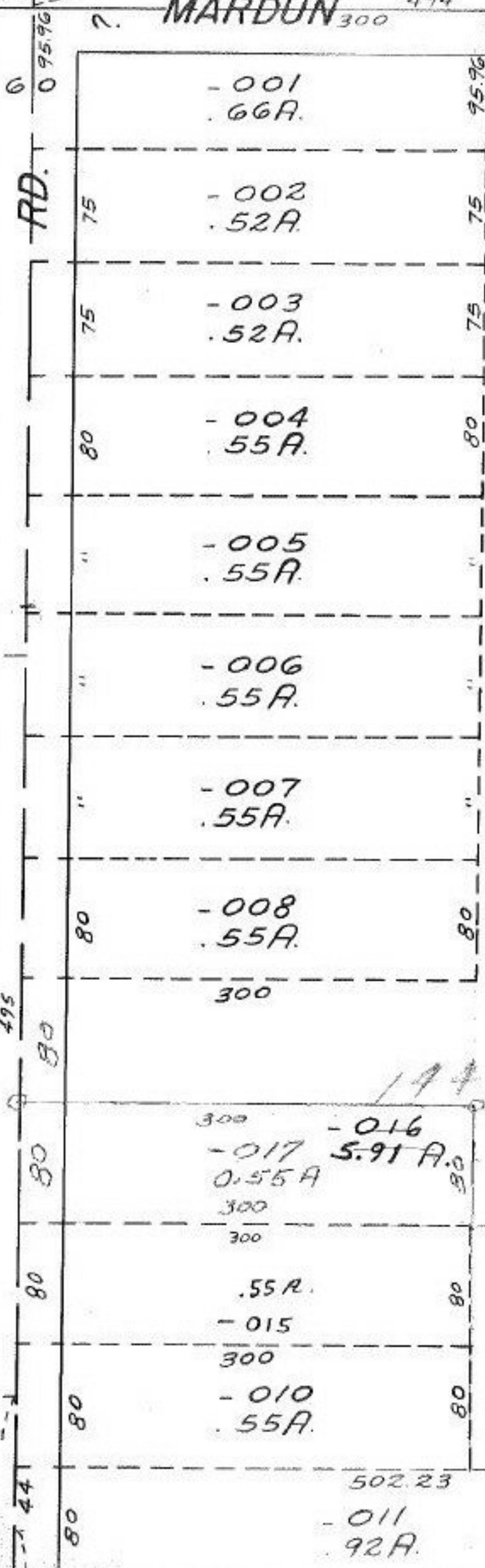


MARDUN 300 494

RD.



- 018
5,36A.

1305.90

#14413

APPROVED LORAIN CO. MAP DEPT.	
DATE 10-6-81	
PAGE 10-00-007-D	
BY <i>C. Yarnall</i>	
VOID AFTER	

JAN 8 1982

719.65

118

495

80

80

80

80

80

75

75

80

"

"

"

80

80

80

80

80

80

95.96

75

75

80

"

"

"

80

80

80

80

80

80

300

300

0.55A

300

300

.55A.

- 015

300

- 010

.55A.

- 016
5.91 A.

502.23

- 011
.92A.

14413