

Y. C. & 545.23

ST. L.

#14399

APPROVED
LORAIN CO.
MAP DEPT.
DATE 7-24-81
PAGE 02-02-023 B
BY T. M. Rau
VOID AFTER

113

-005
7.98A.

T.M.
1-6-82

526.11

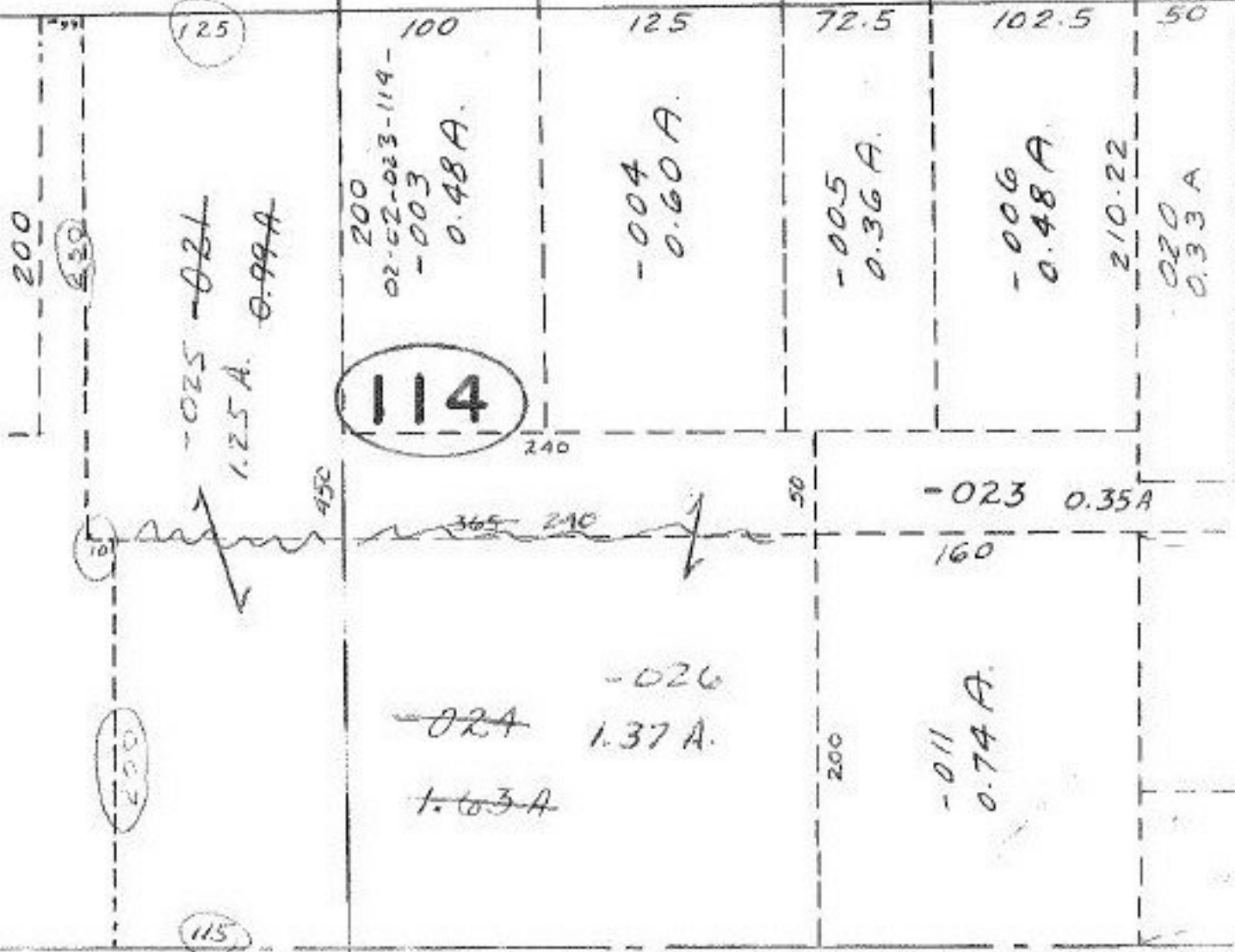
630

-002
1.28 A.

-003
1.38 A.

-016
1.76 A.

387.82



-017
2.48 A

365.22

SEE 2-02-018-B

1.05
0.74
2.62
1.25
1.37

56250
125A