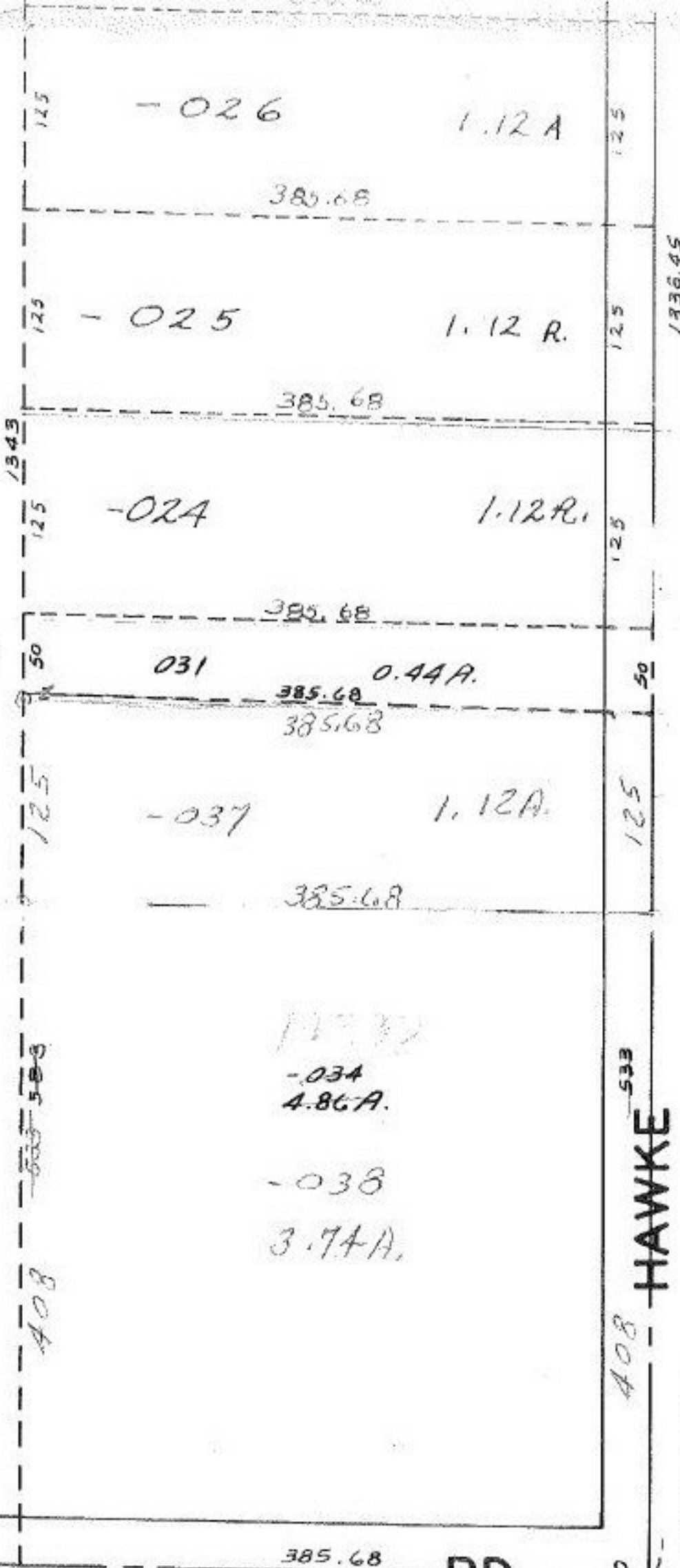


-036
7.24 A.

~~Straightened Line
Use pencil line~~

34 1/2
10 1/2
5 -
40

-01A
0.59 A.
264



533
HAWKE
A08

#14392

APPROVED LORAIN CO. MAP DEPT.	
DATE 9-22-81	
PAGE 11-00-006-B	
BY C. J. Francis	
VOID AFTER	

RD.
JAN 8 1982