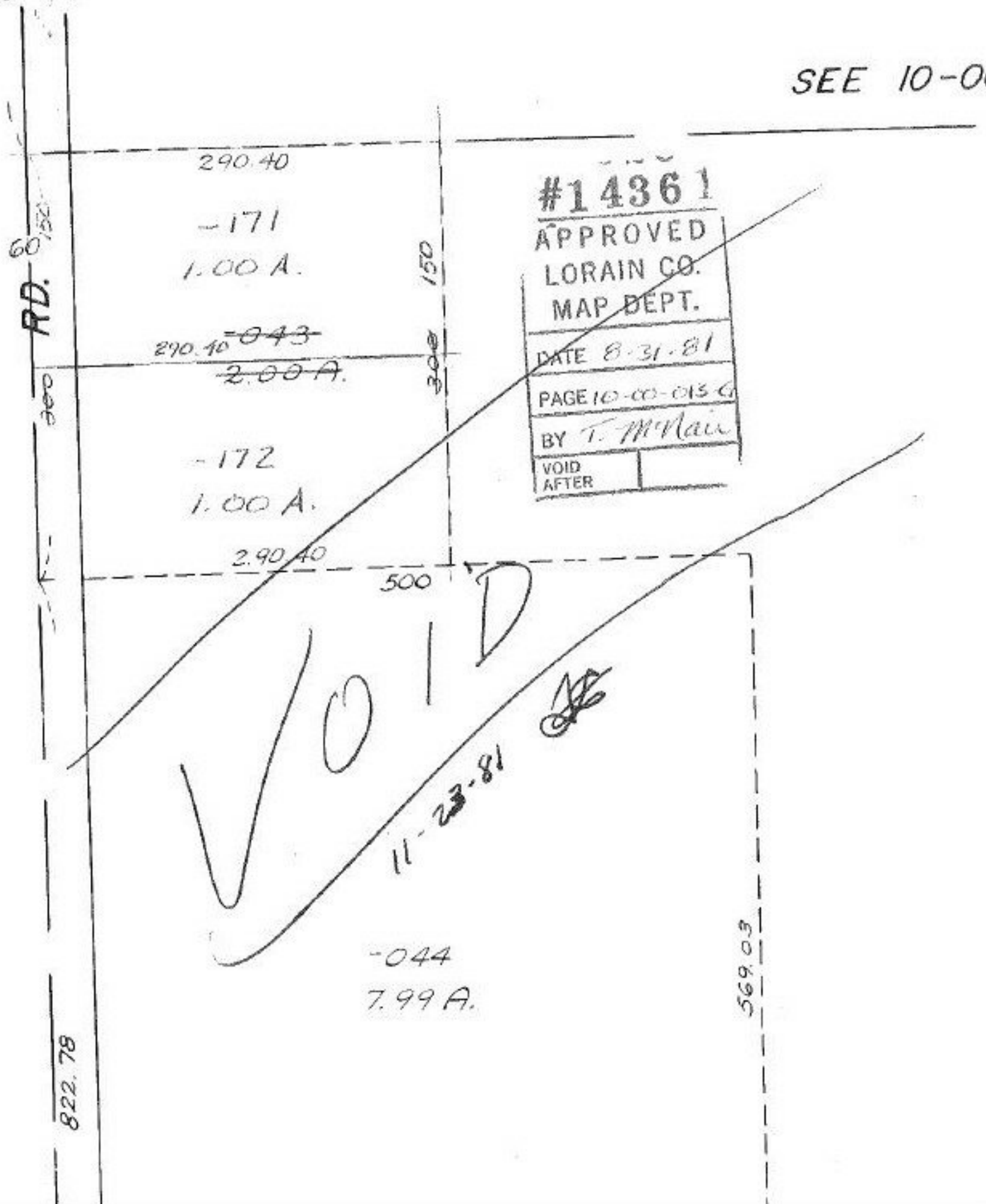


672.95' FROM E. BIRMGHAM RD.

SEE 10-00



#14361
 APPROVED
 LORAIN CO.
 MAP DEPT.
 DATE 8-31-81
 PAGE 10-00-013 G
 BY T. McLaw
 VOID AFTER

VOID
 11-23-81

-044
 7.99 A.

RD. 60.50

300

822.78

290.40

-171
 1.00 A.

~~270.40~~ ~~-043~~
 2.00 A.

-172
 1.00 A.

2.90.40

500

150
~~300~~

569.03