

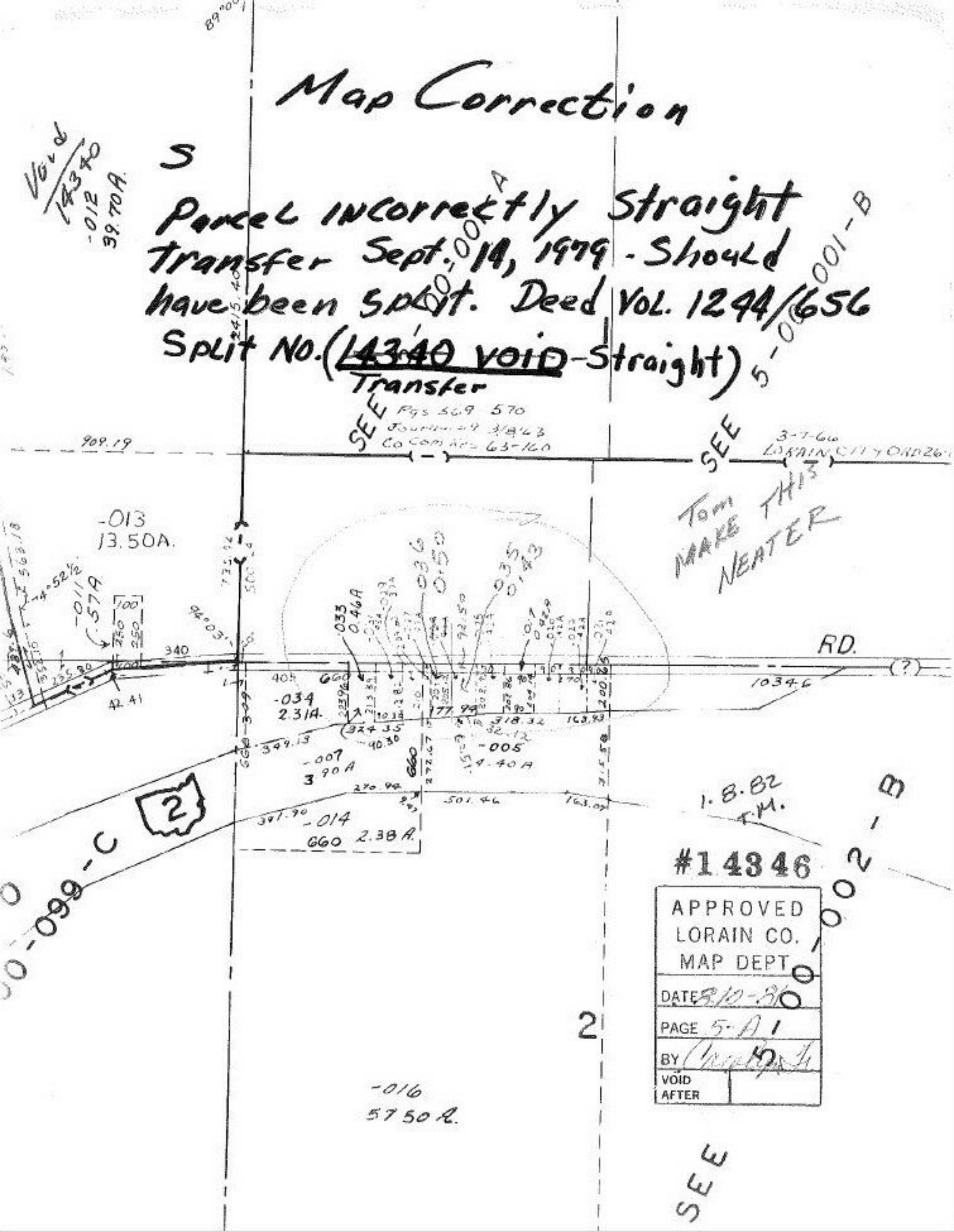
Map Correction

S
 Parcel INCORRECTLY Straight
 Transfer Sept. 14, 1979 - Should
 have been split. Deed Vol. 1244/656
 Split NO. (~~14340~~ VOID - Straight) 5-000001-B

SEE Pgs 569 570
 Journal 49 3/8/43
 Co Com 42 63-160

SEE 3-7-60
 LORAIN CITY ORD 26

TOM
 MAKE THIS
 NEATER



VOID
 14340
 -012
 39.70A

909.19

-013
 13.50A

-011A

42.41

2

-034
 2.31A

-007
 3.90A

-014
 660 2.38A

-016
 57.50A

#14346

APPROVED LORAIN CO. MAP DEPT	
DATE	8/10-8/10
PAGE	5-A 1
BY	<i>[Signature]</i>
VOID AFTER	

SEE