

-012
39.70A

2415.40

SEE 5-00-001-A

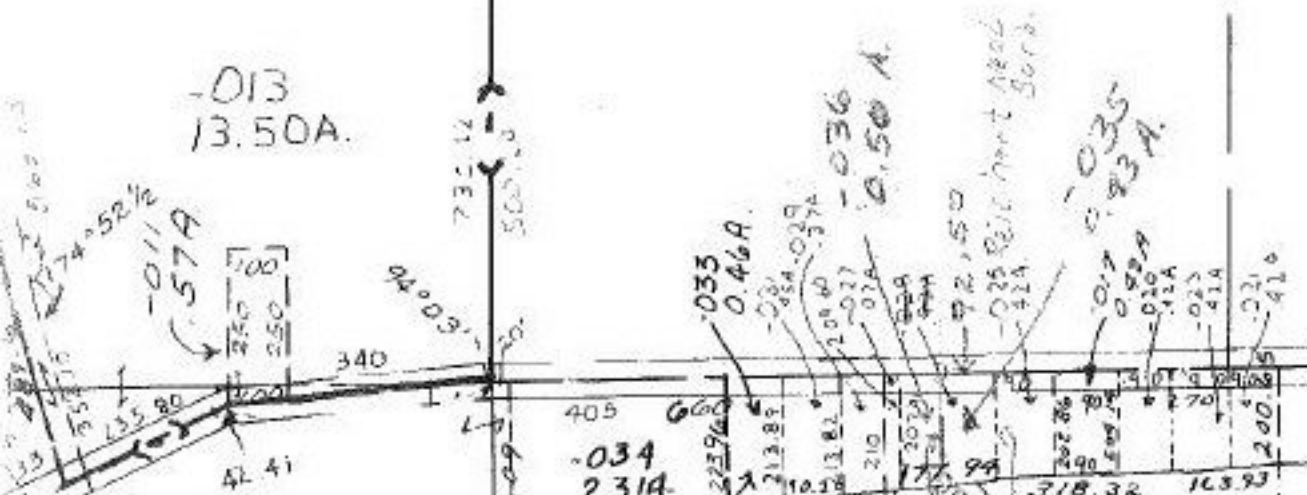
SEE 5-00-001-B

Pgs 569-570
Journal 159 3/18/63
Co Com. Res 63-160

3-7-66
LORAIN CITY ORD 266

909.19

-013
13.50A.



Parcel incorrectly
straight Transfer Sept
1A, 1979. Should have been
split. Deed Vol. 1244-656
See # 14346 For
split.
Correction

2

00-099-C

5-00-000

-016
57.50A.

8-10-81

#14340

SEE

APPROVED LORAIN CO. MAP DEPT.	
DATE 3-6-81	
PAGE 5-A	
BY [Signature]	
VOID AFTER	