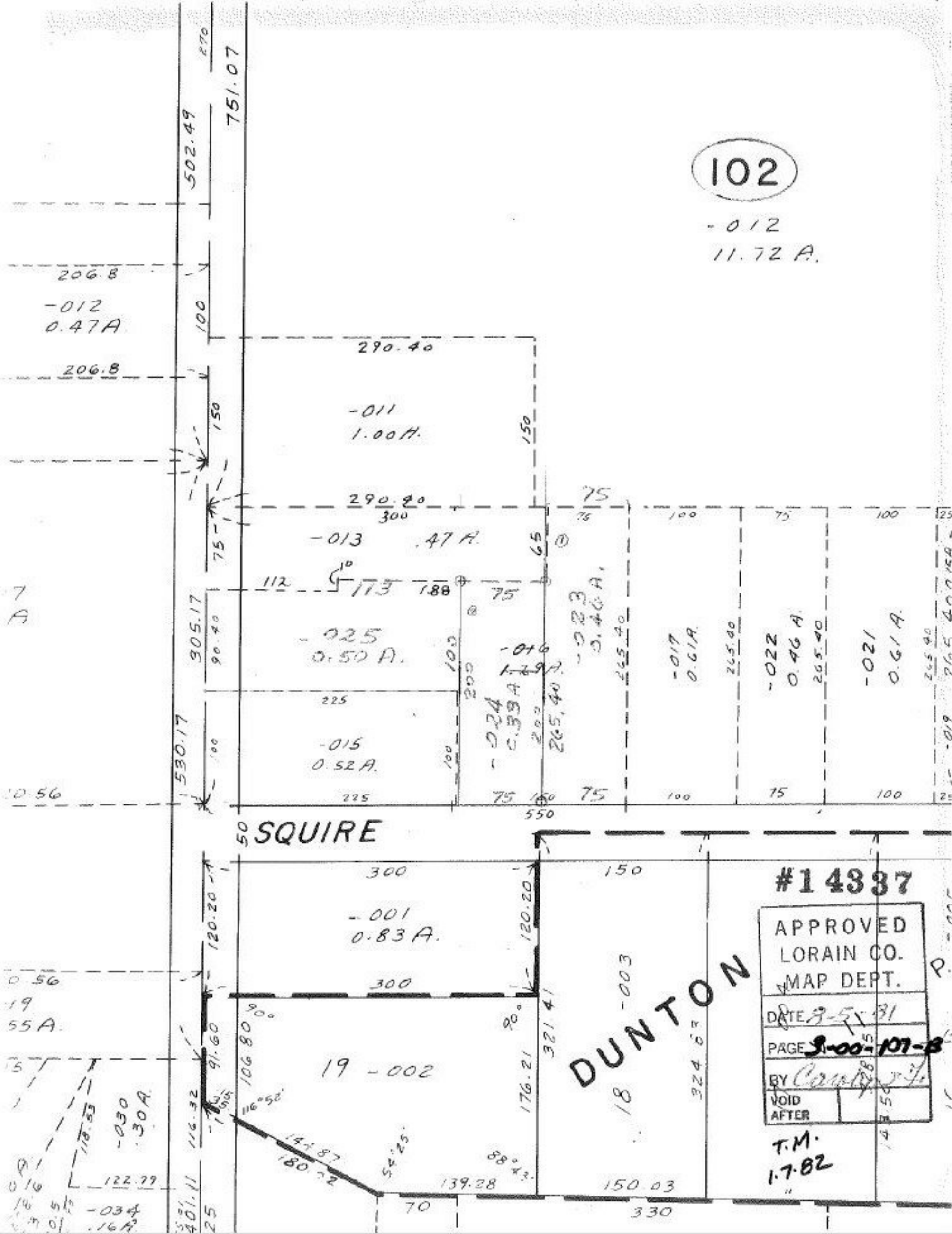


102

-012
11.72 A.



206.8
-012
0.47A

290.40

-011
1.00A.

290.40
300
-013
47A.

-025
0.50A.

-015
0.52A.

-001
0.83A.

19-002

DUNTON

#14337

APPROVED
LORAIN CO.
MAP DEPT.

DATE 8-5-81

PAGE 3-00-5-107-B

BY [Signature]
VOID
AFTER

T.M.
1-7-82

502.49

751.07

305.17

530.17

SQUIRE

300

150

300

122.79

401.11

106.80
90°

116°52'

141.87
180.72

54°25'

139.28

176.21
90°

321.41

150.03

330

324.63

DUNTON

148.50

P.