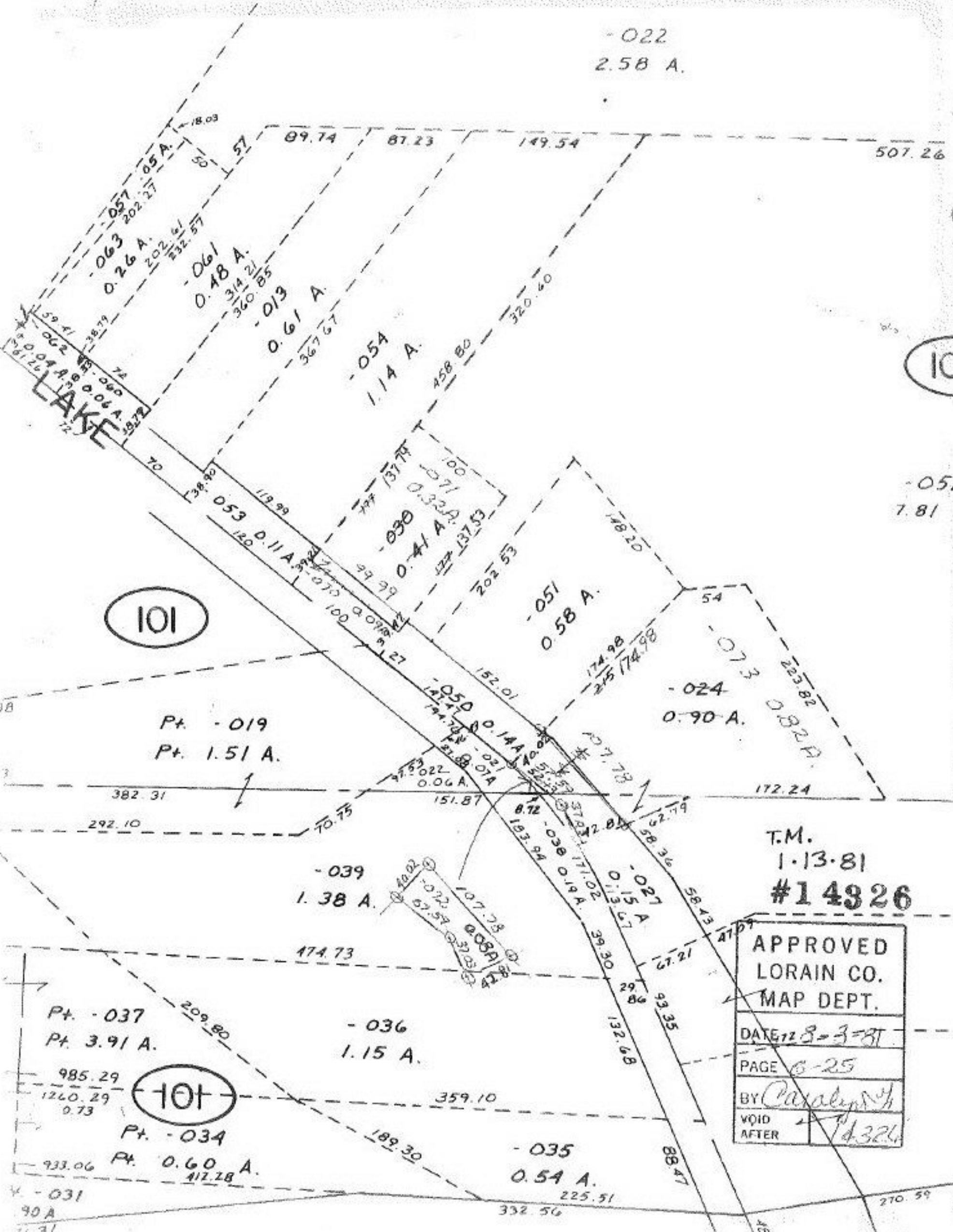


- 022
2.58 A.

507.26



101

10

- 052
7.81

Pt. - 019
Pt. 1.51 A.

T.M.
1-13-81
#14326

APPROVED LORAIN CO. MAP DEPT.
DATE 12-3-81
PAGE 6-25
BY <i>Caroline</i>
VOID AFTER <i>14326</i>

101

Pt. - 037
Pt. 3.91 A.

- 036
1.15 A.

985.29
1260.29
0.73
Pt. - 034
Pt. 0.60 A.
412.28

- 035
0.54 A.

- 031
90 A
71.31

270.59