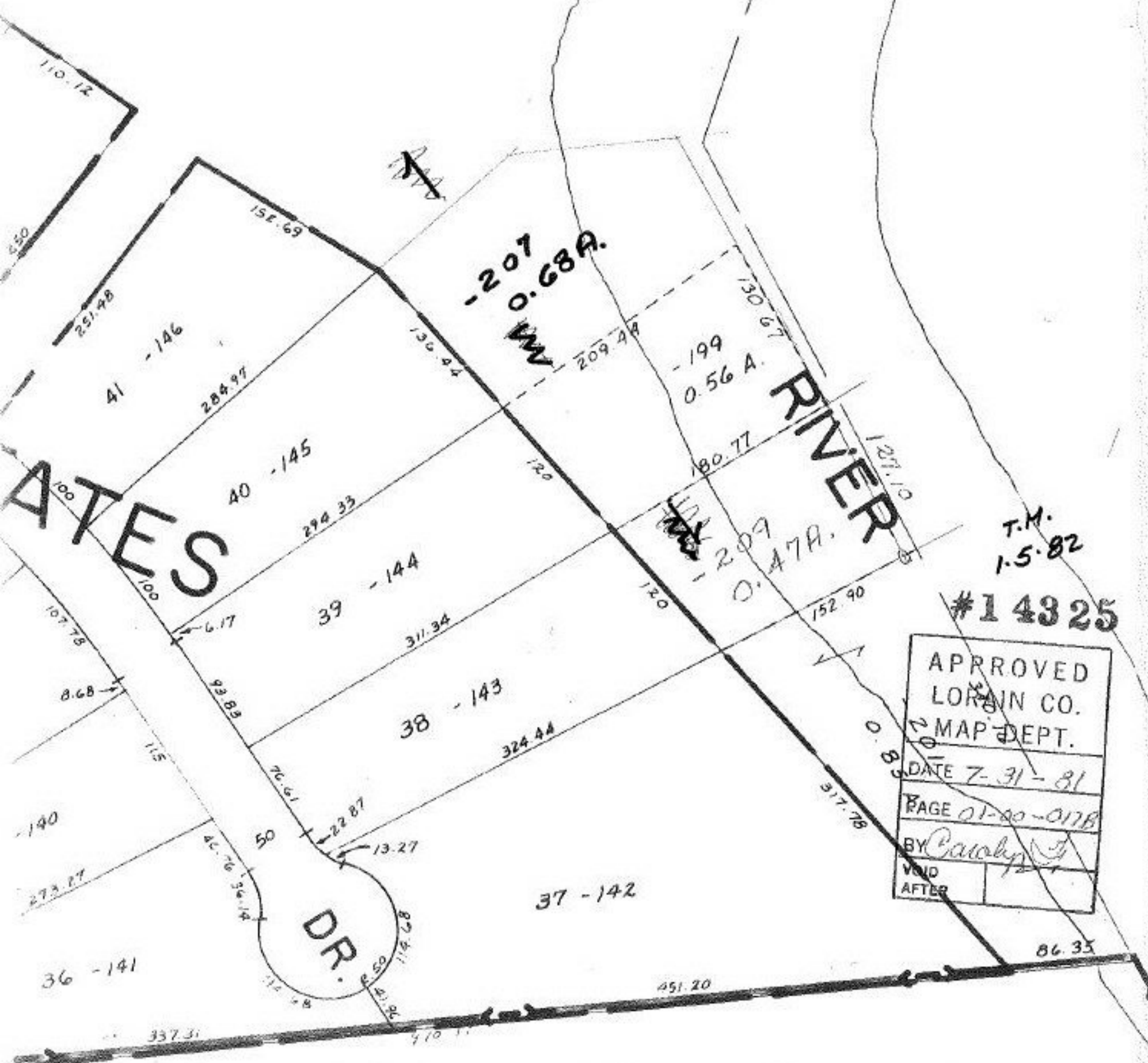


~~- 202~~
~~16.76~~ A.

- 208
16.08A.

- 210
15.61A.



- 207
0.68A.

- 199
0.56 A.

- 209
0.47A.

T.M.
1.5.82

#14325

APPROVED	
LORAIN CO.	
MAP DEPT.	
DATE 7-31-81	
PAGE 01-00-0178	
BY Carolyn J.	
VOID	AFTER

DR.

RIVER

110.12

251.98

284.97

294.33

311.34

324.44

337.31

374.11

410.11

451.20

151.69

130.44

120

120

120

120

120

120

130.67

209.98

180.77

152.90

121.10

0.83

317.78

86.35

