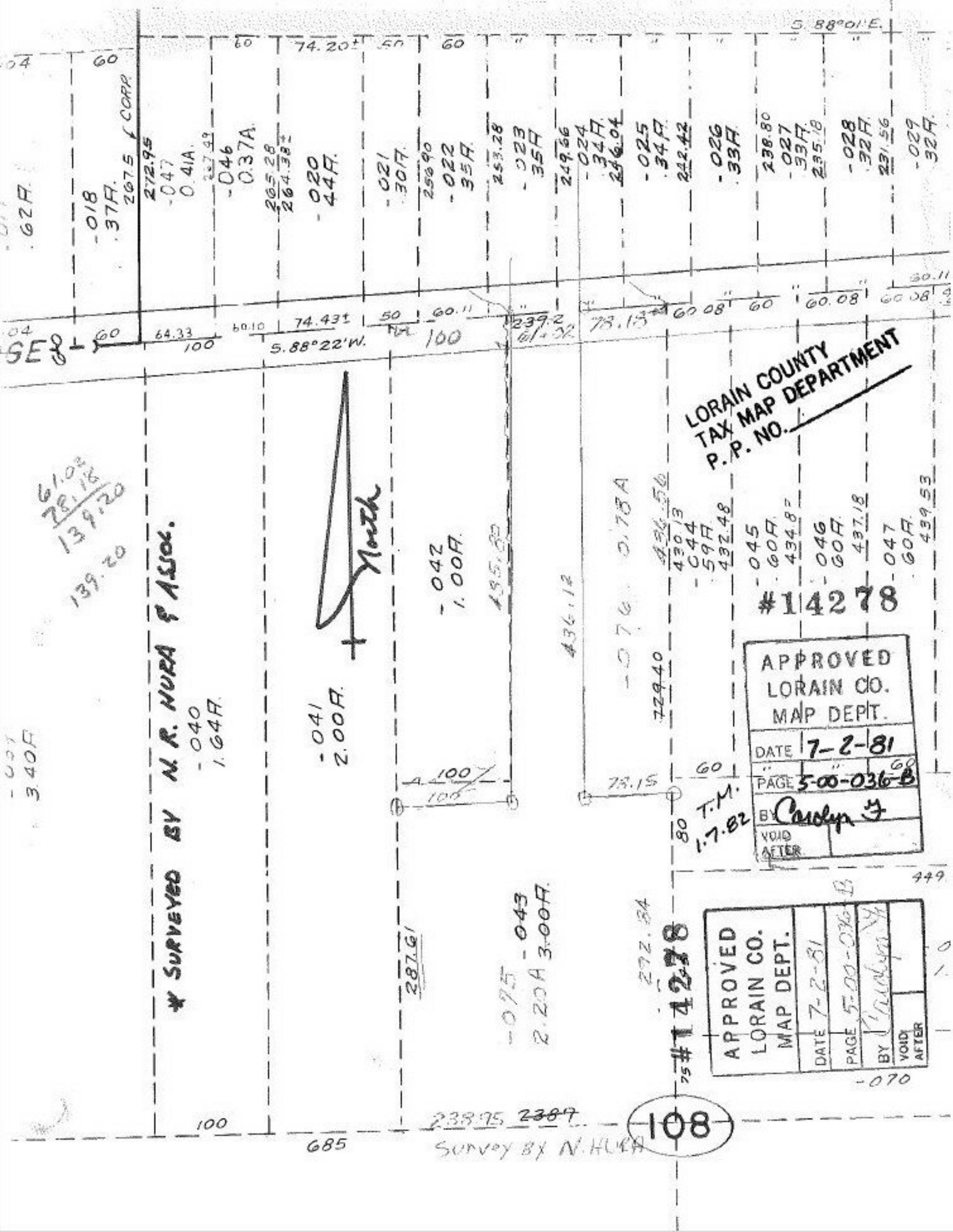


S. 88°01' E.



62F.

018
37F.

2075 / CORR

272.95

047

0.41A.

267.99

046

0.37A.

265.28

264.38±

020
44F.

021
30F.

250.90

022

35F.

253.28

023

35F.

249.66

024

34F.

246.04

025

34F.

242.42

026

33F.

238.80

027

33F.

235.18

028

32F.

231.56

029

32F.

229.32F.

SE 80

60

64.33

100

60.10

74.431

5.88° 22' W.

50

60.11

100

239.2

61.02

78.15

60.08

60

60.08

60

60.08

60

60.08

60

60.08

60

60.08

60.11

61.02
28.18
139.20

* SURVEYED BY N. R. NURA & ASSOC.

040

1.64F.

041
2.00F.



042
1.00F.

435.80

436.12

076
0.78A

436.56

430.13

044

59F.

432.48

045

60F.

434.87

046

60F.

437.18

047

60F.

439.53

LORAIN COUNTY
TAX MAP DEPARTMENT
P. P. NO.

#14278

APPROVED LORAIN CO. MAP DEPT.	
DATE	7-2-81
PAGE	5-00-036-B
BY	Carolyn J
VOID AFTER	

APPROVED LORAIN CO. MAP DEPT.	
DATE	7-2-81
PAGE	5-00-036-B
BY	Carolyn J
VOID AFTER	

75 #14278

292.34

108

100

238.95 238.9

685

Survey by N. NURA

-070

449

10