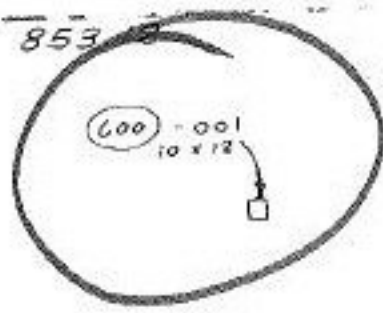


#14168

APR 27 1981

[Handwritten signature]

APPROVED LORAIN CO. MAP DEPT.	
DATE	4-27-81
PAGE	4-00-007-05
BY	<i>[Handwritten signature]</i>
VOID AFTER	



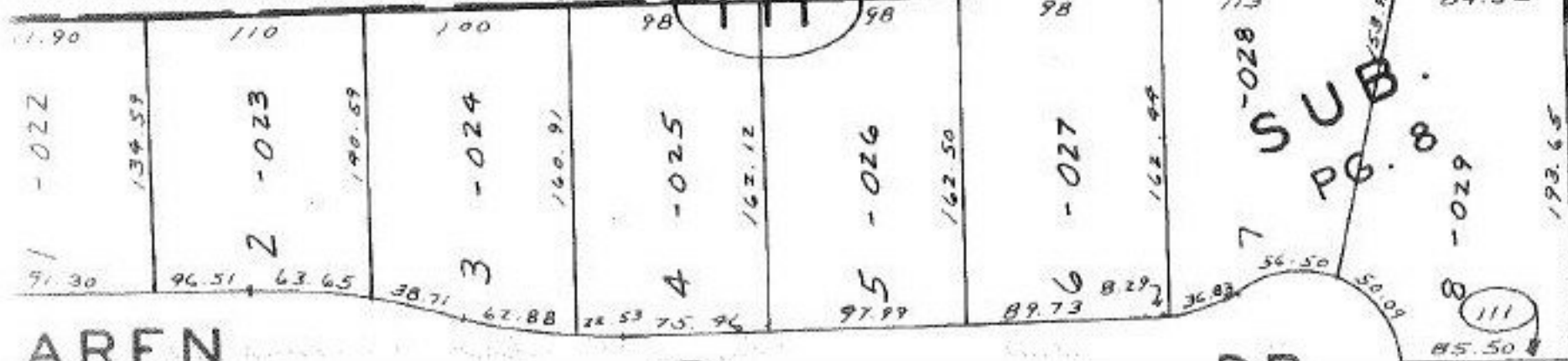
SEE 4-00-007-

-016
7.00F.

852.50

-017
7.00F.

853.44



357.74

358

N.0°09'51"W.

193.65

85.50

92.50

32.0

138.4

138

130

138

130

37.0

130

44
138

12

1

12