

#14168

APPROVED
LORAIN CO.
MAP DEPT.

DATE 4-27-81

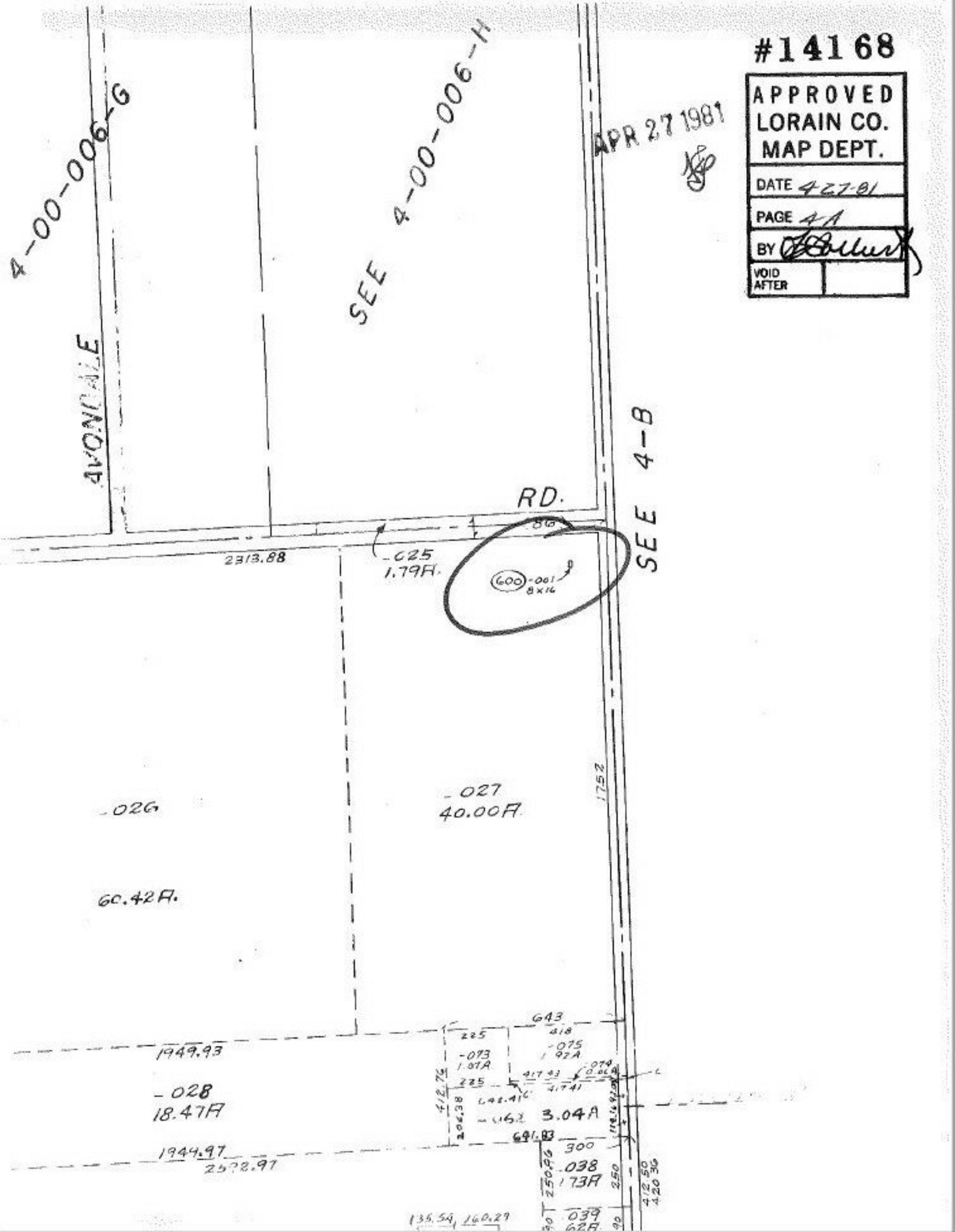
PAGE 4A

BY *[Signature]*

VOID
AFTER

APR 27 1981

[Signature]

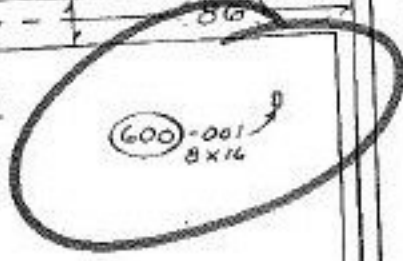


4-00-006-G
AVONDALE

SEE 4-00-006-H

SEE 4-B

RD.



2313.88

-025
1.79F.

-026

60.42F.

-027
40.00F.

1752

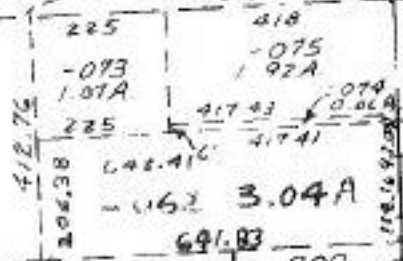
1949.93

-028
18.47F

1944.97
2522.97

135.54, 160.29

643



250.96
038
REL
173F

039
62F
90
90

412.50
420.36