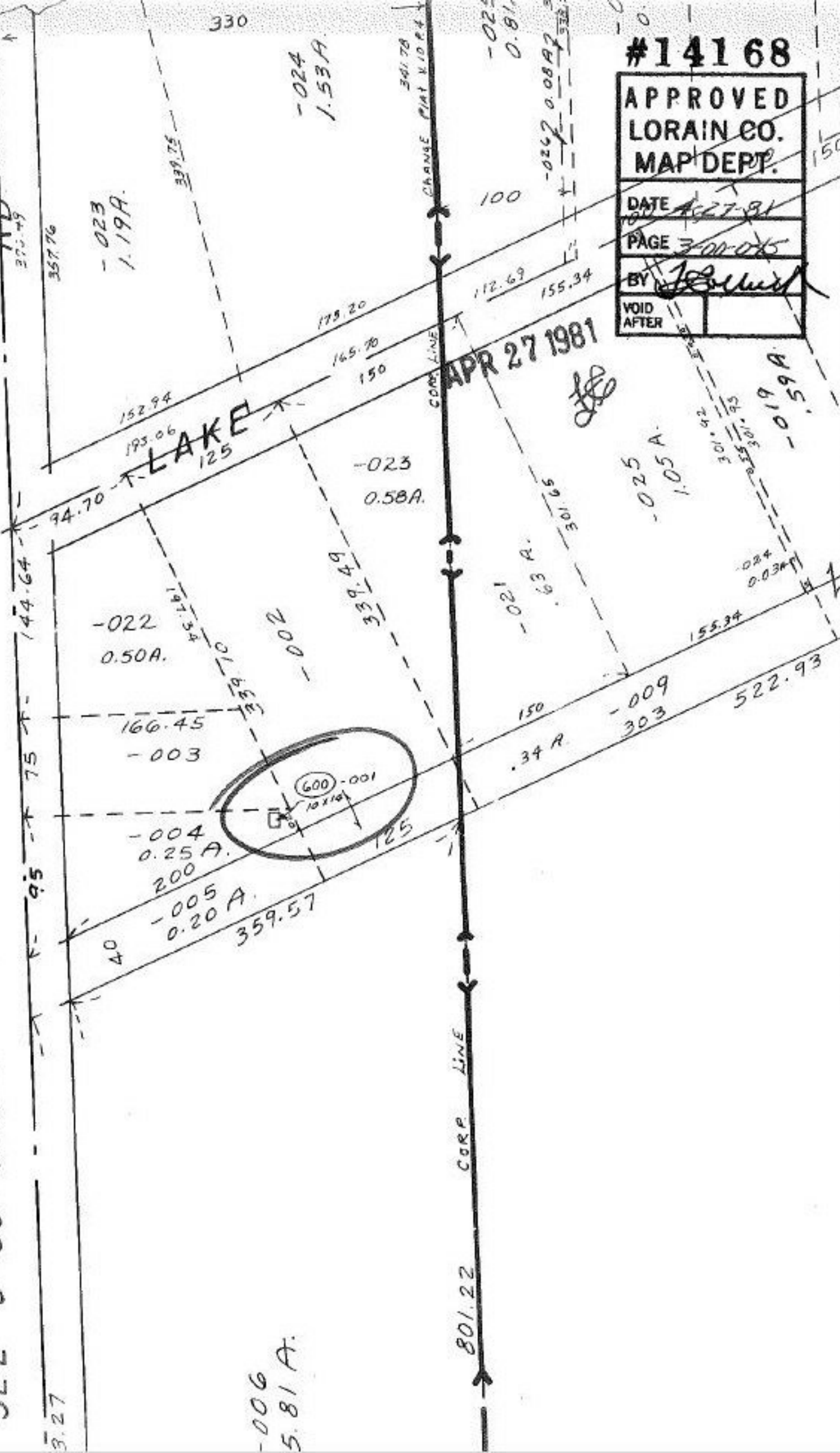


SEE 3-00-046-A

RD



#14168

APPROVED  
LORAIN CO.  
MAP DEPT.

DATE 4-27-81

PAGE 3-00-045

BY *[Signature]*

VOID  
AFTER

APR 27 1981



3.27

144.64

75

95

40

359.57

125

166.45

160.45

152.94

193.06

94.70

150

165.70

175.20

150

112.69

155.34

150

301.65

63 A.

155.34

150

303

303

522.93

357.76

339.75

359.10

339.49

301.92

301.95

301.95

301.95

301.95

301.95

301.95

301.95

301.95

301.95

301.95

301.95

301.95

301.95

301.95

-022  
0.50A.

-003

-004  
0.25 A.  
200

-005  
0.20 A.

-002

-023  
0.58A.

-024  
1.53A.

-025  
1.05 A.

-024  
0.03A

-009  
303

-021  
63 A.

-021  
0.81

-022  
0.08A

-025  
1.05 A.

-019  
0.59A

-006  
5.81 A.

801.22

341.78

341.78

341.78

341.78

341.78

341.78

341.78

330

100

150

150

150

150

150

150

150

150

150

150

150

150

150

150

150

150

150

150

150

150

150

150

150

150

150

150

150

150

150

150

150

150

330

100

150

150

150

150

150

150

150

150

150

150

150

150

150

150

150

150

150

150

150

150

150

150

150

150

150

150

150

150

150

150

150

150

330

100

150

150

150

150

150

150

150

150

150

150

150

150

150

150

150

150

150

150

150

150

150

150

150

150

150

150

150

150

150

150

150

150