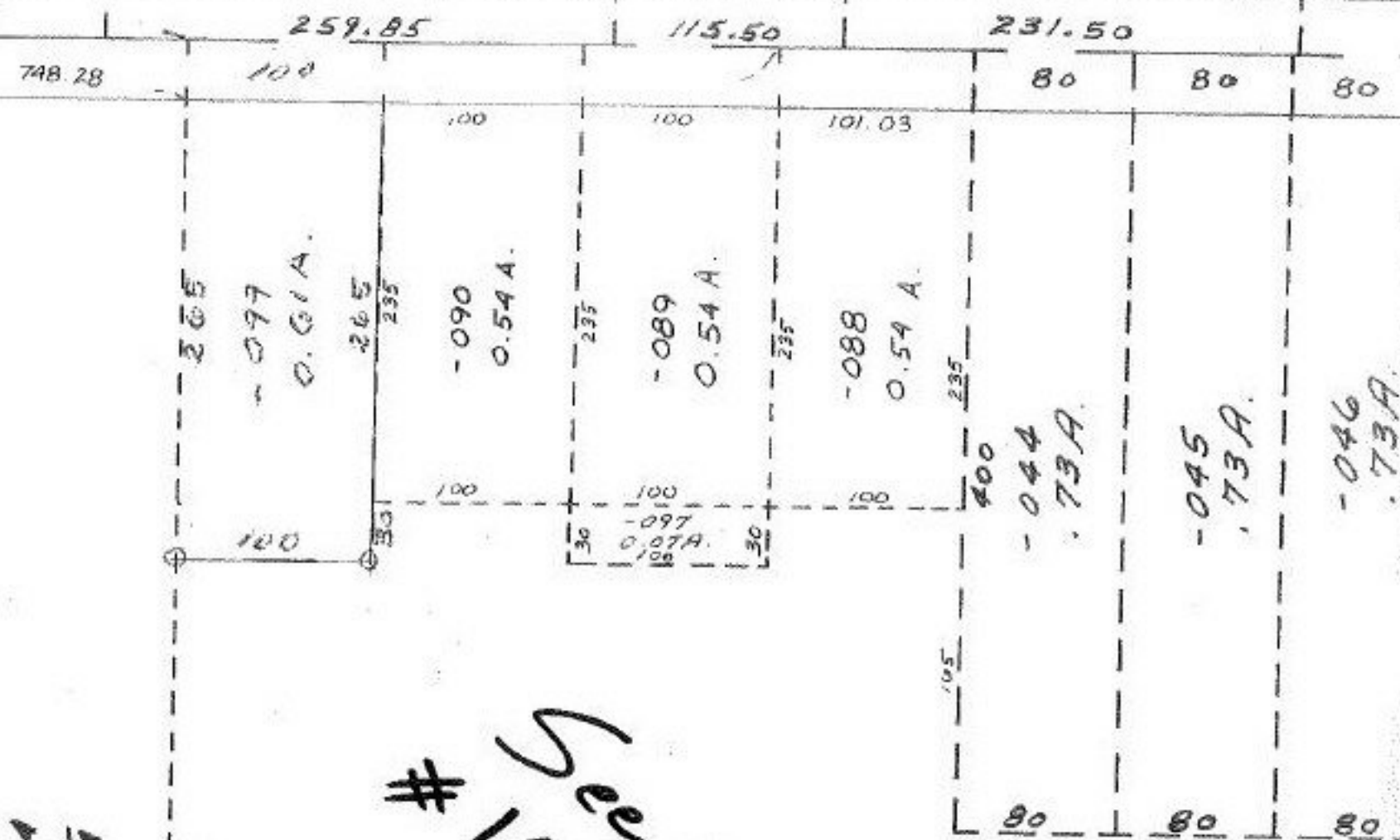


548.23
K.F.R. 189.30



14448 See split
for correction No
14148

809.74
265
549.74
544.74

~~-098
9/5 A.
14/109~~

14148

JAN 8 1982

[Signature]

APPROVED LORAIN CO. MAP DEPT.	
DATE 4-15-81	
PAGE 4-00-009-14148	
BY <i>Cochran</i>	
VOID AFTER	

STATE

-073
7.82 A.

90